



COBALT BOATS



[WWW.COBALTBOATS.COM](http://www.COBALTBOATS.COM)



What prove to be, in memory, the adventures of a lifetime.

Who can say when first you heard? The multicolored minute when the open water spoke, and the dream began. Try now. To this day, can you report the moment? Can you reach back and listen again to that faint call, a sun-flecked whisper -- relentless as a mother's summons -- coming from just beyond the farthest thing a kid could ever hope to see.

At Cobalt, we build boats that answer the call. It is a relationship like no other – owners and their boats. It is that first grip at the helm that releases a sense of assurance down the spine. At that very moment...a promise is made. With each ride, with each cruise comes conversation, laughter and pure enjoyment afloat. At that very moment, a bond is formed on trust, but not just that, a type of trust that feels like family. And with that trust arises a certain lifestyle, an opportunity for families to come together and enjoy what life is truly about. It is a type of confidence that only a Cobalt can instill in its owner.

Our Cobalt family believes we have a unique opportunity to enrich life, to help create life-long memories, to arouse a passion for the boating lifestyle. We vow to work tirelessly, creating the most innovative, well-engineered, and best performing boats imaginable. We vow to let our work be consumed by every little detail, every aspect of fit and finish.

This classic tradition will continue in our daily pursuit to build not just boats, but deep personal possessions. We will continue on with our philosophy of compromising absolutely nothing, especially when it comes to constructing piece by piece a watercraft that will create memories of a lifetime.

We are excited to share Cobalt's passions and why we do what we do for our customers everyday. You drive us to perform everyday. Thank you and welcome to the family.



Customer Inspired Innovation

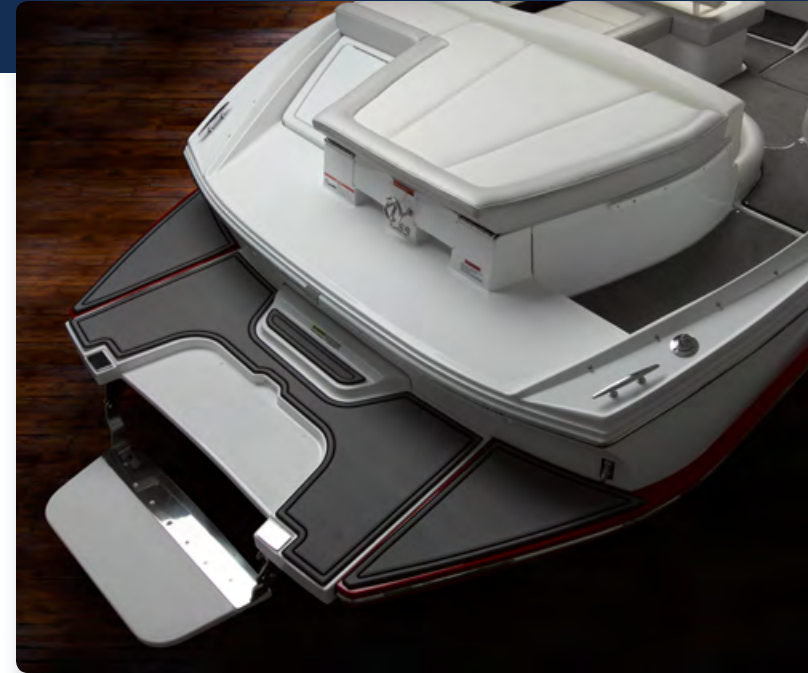
Swim Platform Functionality

Cobalt's swim platforms are large, welcoming and safe, suspended just above the waterline for easy use in all water-borne activities. Oversized, polished stainless steel tubing wraps every platform to protect the boat when docking. Cobalt's exclusive and patented swim step requires only two easy flips: down to use, back to stow. The swim step makes boarding your Cobalt a breeze, and provides a perfectly cool resting area. Illuminate the platform above or below the waterline with option choices to suit your desires.

Industry Firsts and Real-World

Across five decades, Cobalt brought innovative functionality to the marketplace. Across five decades, other marine manufacturers have seen fit to copy the thoughtful design that has always defined our boats. Again this year, we will show an entire industry exactly the way to go.

- ☞ A Cobalt first: the integrated bow eye with a scuff plate for protection from trailer marks
- ☞ Cobalt was the first stern drive builder to feature the walk-thru transom, today, all our models are equipped with either a single or dual aft passageway for easy boarding
- ☞ Stainless-steel adjustable poles to secure and tighten bimini tops with our innovative built-in turnbuckle -- no fabric straps here
- ☞ Quick-release fender clips utilize stainless steel sockets for perfect placement and convenient deployment
- ☞ Cushioned storage lids with double-knuckled hinges to hold the lids open for easy access to the compartment below
- ☞ Our often-imitated, never-duplicated flip-lip seat bolster – the captain sits high and comfortable, enjoying the full thrill of the ride
- ☞ A safer latch for the windshield walk-thru, holding the door securely open – yet another Cobalt first
- ☞ Perhaps the most imitated component of performance in the boating industry, Cobalt's extended running surface for quicker planing, firm and true turns, minimized bow rise, and greater lift at the stern



Finely Detailed Interiors

The technical word is “interface,” those sensory exchanges between boat and owner, those points of contact so fundamental to the enjoyment of a day on the water, so critical to the determination of a boat’s long-term value. Glance at any cockpit and witness the full effect of a Cobalt interior – straight, smooth, uniform, and very, very good looking. Better yet, cruise a Cobalt at first opportunity for some meaningful, memorable interfacing of your own.

Start at the helm, where strength meets stylish strength. Rock-solid fiberglass substructure rides beneath upholstered good looks, as optional Ebony Macassar trim adorns the helm’s metal panels. The instrumentation and its mountings borrow from aircraft and jewelry designers alike. Stainless steel switch mechanisms are firm, sure, and sturdy.

Cobalt upholstery involves the fingers. Butter-soft and bull-strong, as tactile as they’re easy on the eye, always double-fastened with both adhesives and staples, and stitched with meticulous precision. Underfoot, the carpet or optional Seagrass flooring is snap-down/snap-out, rubber-backed, backed again with skid resistant no-flex composite flooring under all, and heavy. Heavy far beyond any marine standard.



- ☞ Cobalt Glass Cockpit with Touch Screen Displays
- ☞ Precision-sewn interior details
- ☞ Double-needle stitching
- ☞ Seats that convert to a sun lounge
- ☞ Deep bow and cockpit seating
- ☞ The warmth and feel of premium materials
- ☞ A hand-crafted helm with detailed double-stitching
- ☞ Ebony Macassar trim
- ☞ Aircraft-inspired stainless switches
- ☞ Honeycomb composite core integrated in flooring – optimized strength-to-weight ratio, with improved sound and vibration dampening



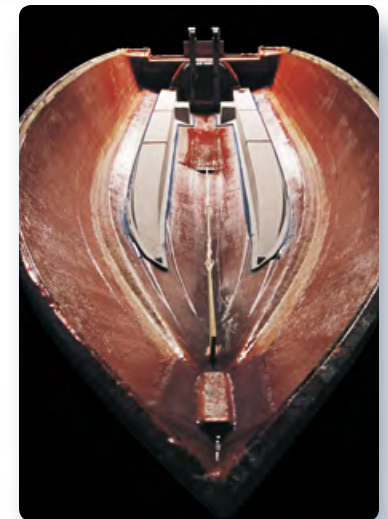
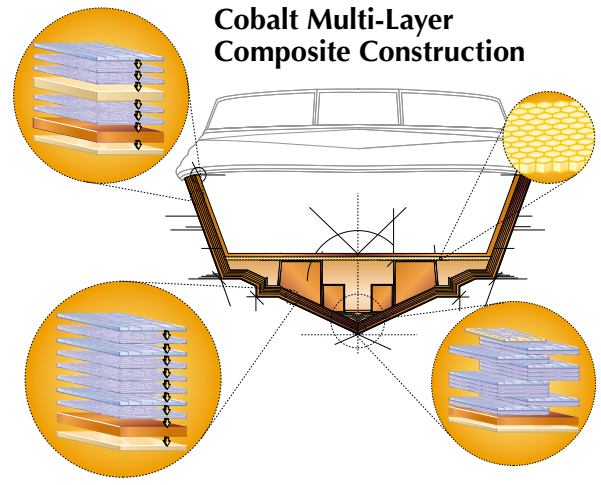
Exceptional Methods of Construction

At Cobalt the hull means hand-work, with every layer rolled a by craftspeople who believe that yet one more careful pass just can't hurt. And so the layers accumulate, eight altogether on the hull bottom and a full sixteen at the keel. Reinforced with Kevlar® and then strengthened again with Spraycore®, the hull's structure hardens into the critical component of the legendary Cobalt ride

The quality of the mold equals the quality of the finish, and so hand-waxing follows after every other part. Old finishes are reworked after every ten parts. No power buffers are allowed, and therefore no unsightly marks or patterns are left behind. And because time in the mold ensures integrity, flexible strength, and year-to-year dependability, the long hours spent in the mold matter even more. Every Cobalt hull cures and cures a while longer – well beyond normal industry standards.

Cobalt longevity is obvious, some of the reasons why less so. Invisible composites, hyperlight and hyperstrong, compose every Cobalt transom. No wood there, not in that all-important forcefield. No wood either in the polypropylene structural honeycomb of the floor. Nor in the all-fiberglass stringers where a methacrylate bonding compound adds lifelong permanence. No wood in the water-impervious roto-cast seat bases.

- ☞ Z-Thane™ strengthening, protective barrier coat in the hull – A Cobalt exclusive
- ☞ Completely hand-laid hulls, reinforced with Kevlar™
- ☞ Composite construction on all structural components
- ☞ Cushioned lids with knuckled hinges for easy, open access to storage compartments large and larger still
- ☞ Exceptional hardware, largely stainless, over-sized, over-strong
- ☞ Graphics deep and strong in the gelcoat
- ☞ Integrated bow eye with a scuffplate for added protection
- ☞ Hand-lamination, up to 16 alternating layers of fiberglass mat and woven roving





Cobalt Transferable Warranty



Ten Year Structural Warranty

Hull & Deck Structure: Hull/deck joints, bulkheads, floor, transom, stringers, motor mounts

Transferable: Fully transferable

Five Year Bow to Stern Component Warranty

Components: All components manufactured or purchased (excluding hull and deck structural components)

Canvas: All canvas

Upholstery: All upholstery

Transferable: Fully transferable

Three Year Gelcoat Finish Warranty

Transferable: Fully transferable

*Service Assist - up to \$100 per claim

On-Water Towing: Applicable to Cobalt 5 year Bow to Stern Component Warranty or Engine Manufacturer Warranty

Hoist/Lift Out: Applicable to Cobalt 5 year Bow to Stern Component Warranty or Engine Manufacturer Warranty

Haul-Out: Applicable to Cobalt 5 year Bow to Stern Component Warranty or Engine Manufacturer Warranty

Dockside Repair Call: Applicable to Cobalt 5 year Bow to Stern Component Warranty or Engine Manufacturer Warranty

Engine Warranty – Manufacturer Direct

Volvo Penta Stern Drive: 2 + 3 Factory Protection Program – North America only (outside North America 2 Year Warranty)

MerCruiser Stern Drive: Five (5) Year Power of Protection Warranty - US and Canada only (International Coverage is regional)

Volvo Penta Diesel: Two (2) Year Warranty

Mercury Outboard: Three (3) Year Warranty

Yamaha Outboard: Three (3) Year Warranty

See written warranties and service agreement for specific coverages.
*Documentation will be required in order to receive the Service Assist benefit.

Color Selections

Actual colors may vary due to the limitations of the digital process and the viewing device calibration. Consult your Cobalt dealer as equipment and specifications are subject to change without notice.

Cockpit Interior Selections

SADDLE INTERIOR (with standard carpet)



SEAGRASS
(carpet option)



TERRA BROWN INTERIOR (with standard carpet)



SEAGRASS
(carpet option)



GENEVA INTERIOR (with standard carpet)



SEAGRASS
(carpet option)



TAHOE GREY INTERIOR (with standard carpet)



SEAGRASS
(carpet option)



TITANIUM INTERIOR (with standard carpet)



SEAGRASS
(carpet option)



Exterior Colors and Graphic Styles

Design Your Dream - Online model specific configurator at www.CobaltBoats.com



3 COLOR CUSTOM GRAPHICS

White base gelcoat with any primary hull color plus an accent.



3 COLOR CUSTOM WITH EDGE GRAPHICS

White base with any side hull color plus boot stripe and edge arc accent. R models only.



CLASSIC GRAPHICS

White base gelcoat with one primary hull color.



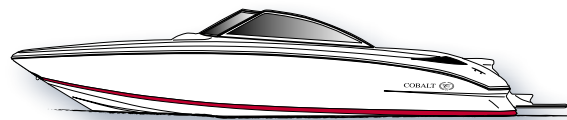
CLASSIC WITH EDGE GRAPHICS

White base with any side hull color plus edge arc accent. R models only.



SPORT GRAPHICS

White hull with a single accent stripe.



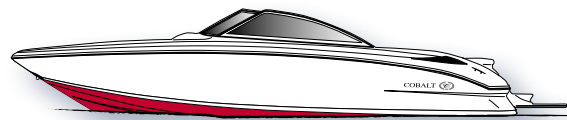
SPORT WITH EDGE GRAPHICS

White base with boot stripe and edge arc accent. R models only.



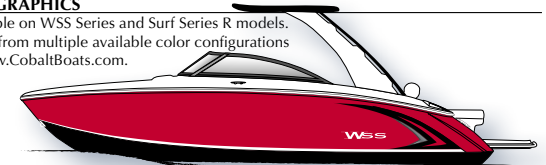
FULL COLOR HULL BOTTOM

Primary hull color fully to the keel. Not available on A-Series or models 30' and larger.



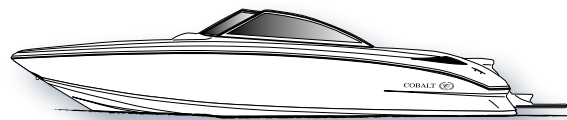
WSS GRAPHICS

Available on WSS Series and Surf Series R models. Select from multiple available color configurations at www.CobaltBoats.com.



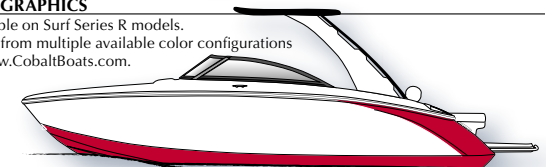
ALL WHITE

White hull and deck.



LINX GRAPHICS

Available on Surf Series R models. Select from multiple available color configurations at www.CobaltBoats.com.



Stereo System Packages

Standard Sound

- Rockford Fosgate Hide-Away Unit
- Rockford Remote at Helm (Transom Remote Optional)
- JL Speakers, 1pr Bow, 2pr Cockpit (1pr Hardtop Speakers, if equipped)

Premium Sound

- Rockford Fosgate Hide-Away Unit
- Rockford Remote at Helm and Transom
- Rockford Amplifiers – Up to 1,400 Watts
- JL Speakers, 1pr Bow, 2pr Cockpit, 1pr Transom*, Kicker Tweeters where equipped (1pr Hardtop Speakers, if equipped)
- JL Subwoofer – 1ea
- Optional 8" JL Tower Speakers & Amp, 1pr – 400 Watts
- Optional 8" JL Tower Speakers & Amp, 2pr – 800 Watts

Platinum Sound

- Rockford Fosgate Hide-Away Unit
- Rockford Remote at Helm and Transom
- Roswell Amplifiers – Up to 2,200 Watts
- Roswell R1 Speakers, 1pr Bow, 2pr Cockpit, 1pr Transom*, Kicker Tweeters where equipped (1pr Hardtop Speakers, if equipped)
- Roswell R1 Subwoofers – 2ea Most Models
- Speakers are RGB Light Ready

Platinum Sound w/Tower Speakers

- Rockford Fosgate Hide-Away Unit
- Rockford Remote at Helm and Transom
- Roswell Amplifiers – Up to 2,800 Watts
- Roswell R1 Speakers, 1pr Bow, 2pr Cockpit, 1pr Transom*, Kicker Tweeters where equipped. (1pr Hardtop Speakers, if equipped)
- Roswell R1 Subwoofers – 2ea Most Models
- Roswell R1 8" Tower Speakers, 2pr – RGB Light Ready

Tops and Covers

Color-matched and custom-tailored, Cobalt bimini tops, enclosures and tonneau covers are made of a premium acrylic marine canvas. This material is extremely strong and fade-resistant, with superior water resistance. Yet it breathes, resisting rot and mildew.

Bimini tops setup rock solid with Cobalt's easily adjustable stainless steel turn-buckle supports. Rigidity simply not found with the use of fabric straps.

The Premium Bimini Top with Easy-Fold stanchions (below) make storing or trailing your boat with the top in a lower position a simple one-person operation.



Bow & Cockpit Tonneau Covers



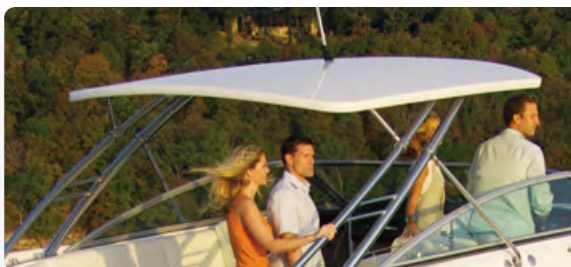
Mooring Cover



Premium Bimini Top



Full Canvas Enclosure (shown on A40)



Arch Hard Top



Arch Hard Top with extending shade



R Models Surf and WSS Arch Bimini Top



Surf & WSS Folding Arch Bimini Top



CS22

COBALT BOATS



COBALT CS22

Redefining comfort and style.

From the clean classic lines of the Cobalt CS23, come all the same style in a slightly smaller package. Enter the Cobalt CS22. Perhaps it's the timeless good looks? The peerless ride and function? We say yes, yes and yes again. The Cobalt CS22 at over 22 feet is a model of efficient use of space. Inheriting the proven performance of the CS hull and graceful deck design, too. Sleek, simple and artful. Step inside and check out the detailed interior including the island sun lounge with a walk-thru transom, Cobalt-branded coaming pads, intricate colored stitching details, and digital helm instrumentation. Oh, and the Bluetooth sound system with six speakers – yes, that too may cause your audiophile guests to awe in your direction. Compliments will keep 'coming as your crew marvels at her innovative qualities – making you look savvy, smart. The CS22 is the perfect choice. A small boat for those who do not wish to compromise luxury or performance. The CS22 - built with pride in the heart of America, Neodesha, Kansas.



CS22



CS22





COBALT CS22



SPECIFICATIONS

Length Overall w/ Swim Platform	22' 6"	6.86 m
Beam	8' 6"	2.59 m
Interior Cockpit Width	92"	2.34 m
Deadrise at Transom	20°	20°
Fuel Capacity	52 gal.	197 L
Bridge Clearance w/o Bimini	3' 11"	1.19 m
Bridge Clearance w/Arch	6' 10"	2.08 m
Draft Drive Up	24"	.61 m
Draft Drive Down	37"	.94 m
Dry Weight	3400 lbs.	1542 kg
Boat Certified Capacity	11 persons	
Boat Certified Capacity w/gear	1595 lbs.	723 kg

VOLVO PENTA STERNDRIVE POWER

V6-240-G DP (non-cat)	240 hp	179 PkW
V6-240-G SX (non-cat)	240 hp	179 PkW
V6-240C-G DP	240 hp	149 PkW
V6-240C-G SX	240 hp	179 PkW
V6-280C-G DP	280 hp	209 PkW
V8-300C-G DP	300 hp	224 PkW
V8-300CE-G DP	300 hp	224 PkW
V8-350C-G DP	350 hp	261 PkW
V8-350CE-G DP	350 hp	261 PkW

MERCURUISER STERNDRIVE POWER

4.5 L MPI ECT-250 Alpha	250 hp	186 PkW
4.5 L MPI ECT-250 B3	250 hp	186 PkW
6.2 L MPI ECT DTS-300 B3	300 hp	224 PkW
6.2 L MPI ECT DTS-350 B3	350 hp	261 PkW
6.2 L MPI ECT-300 B3	300 hp	224 PkW
6.2 L MPI ECT-350 B3	350 hp	261 PkW

COBALT cs22



STANDARD EQUIPMENT

Cockpit Configuration

- Dual Aft Walk-Thru
- L Lounge

Dash and Instrumentation

- Accessory Power Plug - 12 Volt
- Composite Helm Eyebrow,
- Custom Stitching
- Depth & Water/Air Temp Gauge Pkg.
- Etched Stainless Steel Instrument Panel
- Hour Meter
- Leather Steering Wheel w/
- Auto Leveling Hub
- Stainless Steel Switches

Exterior

- Anchor Locker
- Bow Scuff Plate, Stainless Steel
- COBALT Oval Logo, Recessed
- Extended Running Surface
- Flip-Down Swim Step w/o Ladder
- Graphics, Molded-In Gelcoat
- Midship Cleats
- Ski Tow Eye, Stainless Steel
- SS Tubular Platform Perimeter Rail
- Stainless Top Trim Windshield

Interior

- Aft Sunpad w/Walk-Thru Transom
- Bow Walk-Thru Door
- Carpet, 40 oz., Snap-In w/Neoprene Back
- Removable Bow & Cockpit Carpet
- Removable Ice Chest
- Seating Varadense Comfort
- Seating, Helm Flip-Up

Stereo

- iPod/USB/MP3 Port
- Sound System, Bluetooth, w/6 Spkrs.
- Stereo Remote, Dash
- Stereo Remote, Transom (Prem. Sound)

Structure, Safety, & Performance

- 10/5/3 Year Warranty Protection
- Battery Switch, Single

- Circuit Breaker Protected Elec System
- Composite Floor
- Composite Seat Bases
- Composite Transom
- Fiberglass Cockpit Liner
- Fiberglass Stringer System
- Fire Extinguisher, Manual
- Ignition Safety Switch
- Kevlar Reinforced Hull
- Stainless Steel Windshield Braces
- Through Prop Exhaust

OPTIONAL EQUIPMENT

Canvas

- Bimini
- Bow Tonneau Cover
- Cockpit Tonneau Cover
- Mooring Cover

Dash and Instrumentation

- Compass
- GPS, Garmin 7607, Touch Screen
- Rudder Indicator, Merc
- Rudder Indicator, Volvo
- XM Weather

Engine Options

- Active Trim, Merc (requires DTS)
- Anti-Corrosion System (Vol
- 200-300hp, Mer-Alpha)
- Ocean-X (Volvo)
- Seacore (Merc)
- Tow Mode (Volvo EVC)

Exterior

- Arch, Alum, Folding w/Bimini
- COBALT Oval Logo, Recessed
- Docking Lights-Stainless Steel
- Fender Clips w/Line (4)
- Flagpole w/Flag
- Sof-Trac Mat, Swim Platform
- Swim Platform Transom Lighting
- Transhield Shipping Cover
- Transom Tilt Switch

- Underwater Lighting
- Wakeboard Racks, Elite (Alum)
- Wakeboard Racks, Triton

Interior

- Aft Filler Cushion, Stbd.
- Air Compressor w/Holder
- Bow Center Cushion Insert
- Dinette Table w/cockpit receptacle
- Floor Covering, Sea Grass
- LED Interior Accent Lighting (RGB)
- Remote Courtesy Lights w/key fob
- Sof-Trac Marine Mat, Cockpit
- Stainless Steel Foot Tread (helm only)
- Throw Pillows, Weighted (10)
- Throw Pillows, Weighted (4)

Stereo

- Prem Sound System w/Arch Spkrs-1 pr.
- Premium Sound System
- Satellite Radio System
- Stereo Remote, Transom (Std. Sound)

Structure, Safety, & Performance

- Battery Maintainer/Charger, 110v
- Battery Maintainer/Charger, 220v
- Battery Switch, Dual w/ACR
- CE Requirements w/Auto Fire Extinguisher
- Cruise Control-Smart Tow (Merc DTS)
- Cruise Control-Zero Off (Vol)
- Drivers Rearview Mirror (W/S Mount)
- Fire Extinguisher, Automatic System
- Tool Kit



CS23

COBALT BOATS

 GATEWAY
SERIES

COBALT CS23

The American Beauty

There is something special about this one. Maybe it is because she comes from a legendary line, the CS23. Perhaps it is her timeless good looks? Her ease and function? We say yes, yes and yes again.

The Cobalt CS23 measures over 23 feet of wisely used space. She has a completely new hull and deck design, too. Sleek, simple and artful. Step inside and check out the detailed interior including the island sun lounge with either a dual or single walk-throughs, Cobalt-branded interior pads, intricate colored stitching details, and digital helm instrumentation. Oh, and the Bluetooth sound system with six speakers – yes, that too may cause your audiophile guests to awe in your direction. Compliments will keep a 'coming as your crew marvels at her innovative qualities – making you look savvy, smart.

The CS23 is the perfect choice. She appeals to those who do not wish to compromise luxury or performance. And now are the days that one should never compromise either. The CS23 - built with pride in the heart of America, Neodesha, Kansas.



CS23



CS23



L-Lounge Interior



L-Lounge with Aft Filler Cushions



Dual Aft Walk-Thru Interior



COBALT CS23



SPECIFICATIONS

Length Overall w/ Swim Platform	23' 8"	7.21 m
Beam	8' 6"	2.59 m
Interior Cockpit Width	92"	2.34 m
Deadrise at Transom	20°	20°
Fuel Capacity	52 gal.	197 L
Bridge Clearance w/o Bimini	3' 11"	1.19 m
Bridge Clearance w/Arch	6' 10"	2.08 m
Draft Drive Up	24"	.61m
Draft Drive Down	37"	.94m
Dry Weight	3700 lbs.	1678 kg
Boat Certified Capacity	12 persons	
Boat Certified Capacity w/gear	1695 lbs.	768 kg

VOLVO PENTA STERNDRIVE POWER

V6-240-G DP (non-cat)	240 hp	179 PkW
V6-240-G SX (non-cat)	240 hp	179 PkW
V6-240C-G DP	240 hp	149 PkW
V6-240C-G SX	240 hp	179 PkW
V6-280C-G DP	280 hp	209 PkW
V8-300C-G DP	300 hp	224 PkW
V8-300CE-G DP	300 hp	224 PkW
V8-350C-G DP	350 hp	261 PkW
V8-350CE-G DP	350 hp	261 PkW

MERCURUISER STERNDRIVE POWER

4.5 L MPI ECT-250 Alpha	250 hp	186 PkW
4.5 L MPI ECT-250 B3	250 hp	186 PkW
6.2 L MPI ECT DTS-300 B3	300 hp	224 PkW
6.2 L MPI ECT DTS-350 B3	350 hp	261 PkW
6.2 L MPI ECT-300 B3	300 hp	224 PkW
6.2 L MPI ECT-350 B3	350 hp	261 PkW

COBALT cs23



STANDARD EQUIPMENT

Dash and Instrumentation

Accessory Power Plug - 12 Volt
Composite Helm Eyebrow,
Custom Stitching
Depth & Water/Air Temp Gauge Pkg.
Etched Stainless Steel Instrument Panel
Hour Meter
Leather Steering Wheel w/
Auto Leveling Hub
Stainless Steel Switches

Exterior

Anchor Locker
Bow Scuff Plate, Stainless Steel
COBALT Oval Logo, Recessed
Extended Running Surface
Flip-Down Swim Step w/o Ladder
Graphics, Molded-In Gelcoat
Midship Cleats
Ski Tow Eye, Stainless Steel
SS Tubular Platform Perimeter Rail
Stainless Top Trim Windshield

Interior

Aft Sunpad w/Walk-Thru Transom
Bow Walk-Thru Door
Carpet, 40 oz., Snap-In w/Neoprene Back
Removable Bow & Cockpit Carpet
Removable Ice Chest
Seating Varadense Comfort
Seating, Helm Flip-Up

Stereo

iPod/USB/MP3 Port
Sound System, Bluetooth, w/6 Spkr.
Stereo Remote, Dash
Stereo Remote, Transom (Prem. Sound)

Structure, Safety, & Performance

10/5/3 Year Warranty Protection
Battery Switch, Single
Circuit Breaker Protected Elec System
Composite Floor
Composite Seat Bases
Composite Transom
Fiberglass Cockpit Liner

Fiberglass Stringer System
Fire Extinguisher, Manual
Ignition Safety Switch
Kevlar Reinforced Hull
Stainless Steel Windshield Braces
Through Prop Exhaust

OPTIONAL EQUIPMENT

Canvas

Bimini
Bow Tonneau Cover
Cockpit Tonneau Cover
Mooring Cover

Cockpit Configuration

L Lounge
Dual Aft Walk-Thru

Dash and Instrumentation

Compass
GPS, Garmin 7607, Touch Screen
Rudder Indicator, Merc
Rudder Indicator, Volvo
XM Weather

Engine Options

Active Trim, Merc (requires DTS)
Anti-Corrosion System (Vol
200-300hp, Mer-Alpha)
Ocean-X (Volvo)
Seacore (Merc)
Tow Mode (Volvo EVC)

Exterior

Arch, Alum, Folding w/Bimini
COBALT Oval Logo, Recessed
Docking Lights-Stainless Steel
Fender Clips w/Line (4)
Flagpole w/Flag
Sof-Trac Mat, Swim Platform
Swim Platform Transom Lighting
Transhield Shipping Cover
Transom Tilt Switch
Underwater Lighting
Wakeboard Racks, Elite (Alum)
Wakeboard Racks, Triton

Interior

Aft Filler Cushion, Port
Aft Filler Cushion, Stbd.
Aft Filler Cushions, Port & Stbd.
Air Compressor w/Holder
Bow Center Cushion Insert
Dinette Table w/cockpit receptacle
Floor Covering, Sea Grass
LED Interior Accent Lighting (RGB)
Remote Courtesy Lights w/key fob
Sof-Trac Marine Mat, Cockpit
Stainless Steel Foot Tread (helm only)
Throw Pillows, Weighted (10)
Throw Pillows, Weighted (4)


Stereo

Prem Sound System w/Arch Spkr-1 pr.
Premium Sound System
Satellite Radio System
Stereo Remote, Transom (Std. Sound)

Structure, Safety, & Performance

Battery Maintainer/Charger, 110v
Battery Maintainer/Charger, 220v
Battery Switch, Dual w/ACR
CE Requirements w/Auto Fire Extinguisher
Cruise Control-Smart Tow (Merc DTS)
Cruise Control-Zero Off (Vol)
Drivers Rearview Mirror (W/S Mount)
Fire Extinguisher, Automatic System
Tool Kit



COBALT 

200s

COBALT BOATS

 GATEWAY
SERIES

COBALT 200s

The 200s brings along all the nuances of design and instances of effortless performance once thought possible only in far larger boats.

A 20 foot boat that encompasses style, performance and comfort, the Cobalt 200s not only has sweet, sweet looks, but also provides convenience and function with every turn. Step aboard and notice maximized interior space – we call it Free Space Reclamation (FSR). And free space it becomes when you are out on the water with friends and family. With walk-about, lay-about, stow-away spaciousness at every turn, the 200s creates its own sort of simple luxury. From the standard digital instrumentation to the wraparound bow to the 89" wide cockpit with the convertible seating, the 200s adapts at a touch from tanning salon to a safe, secure seating environment. The sculpted hull speaks for itself, while the long, purposeful lines sweep and flow to catch a perfect light, the profile classic in every subtle detail.

And while we are talking about feature-richness here, let us not forget about the 200s standard extended swim platform with the available patented swim step. A revolutionary innovation that will go down in the record books. Take a look for yourself – we know you won't be disappointed.



200s



200s



The "S" Sport seating interior configuration offers the port-side passenger a choice of facing forward or aft.

200s



COBALT 200s



SPECIFICATIONS

Length Overall w/o Swim Platform	19' 4"	5.89 m
Length Overall w/ Swim Platform	20' 10"	6.35 m
Beam	8' 4"	2.54 m
Deadrise at Transom	20°	20°
Fuel Capacity	47 gal.	178 L
Bridge Clearance w/o Bimini	3' 11"	1.19 m
Bridge Clearance w/Tower	6' 10"	2.08 m
Draft Drive Up	24"	.61m
Draft Drive Down	37"	.94m
Dry Weight	3500 lbs.	1588 kg
Boat Certified Capacity	11 persons	
Boat Certified Capacity w/gear	1515 lbs.	687 kg

VOLVO PENTA STERNDRIVE POWER

V6-200C-G DP	200 hp	149 PkW
V6-200C-G SX	200 hp	149 PkW
V6-200G DP (non-cat)	200 hp	149 PkW
V6-200G SX (non-cat)	200 hp	149 PkW
V6-240C-G DP	240 hp	149 PkW
V6-240C-G SX	240 hp	179 PkW
V6-240G DP (non-cat)	240 hp	149 PkW
V6-240G SX (non-cat)	240 hp	149 PkW
V6-280C-G DP	280 hp	209 PkW
V8-300C-G DP	300 hp	224 PkW
V8-300CE-G DP	300 hp	224 PkW

MERCURISER STERNDRIVE POWER

4.5 L MPI ECT-200 Alpha	200 hp	149 PkW
4.5 L MPI ECT-250 Alpha	250 hp	186 PkW
4.5 L MPI ECT-250 B3	250 hp	186 PkW
4.5 L MPI-200 Alpha (non-cat)	200 hp	149 PkW
6.2 L MPI ECT DTS - 300 B3	300 hp	224 PkW
6.2 L MPI ECT-300 B3	300 hp	224 PkW

COBALT 200s



STANDARD EQUIPMENT

Dash and Instrumentation

Accessory Power Plug - 12 Volt
Aluminum Dash Panels
Color-Matched Dash Panels
Composite Helm Eyebrow,
Custom Stitching
Depth & Water/Air Temp Gauge Pkg.
Hour Meter
Leather Steering Wheel w/
Auto Leveling Hub
Stainless Steel Switches

Exterior

Anchor Locker
Bow Scuff Plate, Stainless Steel
Extended Running Surface
Flip-Down Swim Step w/o Ladder
Graphics, Molded-In Gelcoat
Midship Cleats
Ski Tow Eye, Stainless Steel
SS Tubular Platform Perimeter Rail
Stainless Top Trim Windshield

Interior

S Sport Seating Configuration
Aft Facing Rumble Seat
Aft Sunpad w/Walk-Thru Transom
Aft Walk-Thru Carpet
Bow Walk-Thru Door
Carpet, 40 oz., Snap-In w/Neoprene Back
Removable Bow & Cockpit Carpet
Removable Ice Chest
Seating Varadense Comfort
Seating, Helm Flip-Up

Stereo

iPod/USB/MP3 Port
Sound System, Bluetooth, w/6 Spkrs.
Stereo Remote, Dash
Stereo Remote, Transom (Prem. Sound)

Structure, Safety, & Performance

10/5/3 Year Warranty Protection
Battery Switch, Single

Circuit Breaker Protected Elec System
Composite Floor
Composite Seat Bases
Composite Transom
Fiberglass Cockpit Liner
Fiberglass Stringer System
Fire Extinguisher, Manual
Ignition Safety Switch
Kevlar Reinforced Hull
Stainless Steel Windshield Braces
Through Prop Exhaust

OPTIONAL EQUIPMENT

Canvas

Bimini
Bow Tonneau Cover
Cockpit Tonneau Cover
Mooring Cover

Dash and Instrumentation

Compass
GPS, Garmin 7607, Touch Screen
Rudder Indicator, Merc
Rudder Indicator, Volvo
XM Weather

Engine Options

Active Trim, Merc (requires DTS)
Anti-Corrosion System (Vol
200-300hp, Mer-Alpha)
Ocean-X (Volvo)
Seacore (Merc)
Tow Mode (Volvo EVC)

Exterior

Arch Elec, Alum. Folding w/Bimini
Arch, Alum, Folding w/Bimini
COBALT Oval Logo, Recessed
Docking Lights-Stainless Steel
Fender Clips w/Line (4)
Flagpole w/Flag
Sof-Trac Marine Mat, Swim Platform
Transhield Shipping Cover
Transom Tilt Switch

Wakeboard Racks, Elite (Alum)
Wakeboard Racks, Triton

Interior

Aft Walk-Thru Filler Cushions
Aft Walk-Thru Gate
Air Compressor w/Holder
Bow Center Cushion Insert
Dinette Table w/cockpit receptacle
Floor Covering, Sea Grass
LED Interior Accent Lighting (RGB)
Remote Courtesy Lights w/key fob
Sof-Trac Marine Mat, Cockpit
Throw Pillows, Weighted (10)
Throw Pillows, Weighted (4)

Stereo

Prem Sound w/Transom & Arch Spkrs
Prem Sound w/Transom Spkrs.
Satellite Radio System
Stereo Remote, Transom (Std. Sound)

Structure, Safety, & Performance

Battery Maintainer/Charger, 110v
Battery Maintainer/Charger, 220v
Battery Switch, Dual w/ACR
CE Requirements w/Auto Fire Extinguisher
Cruise Control-Smart Tow (Merc DTS)
Cruise Control-Zero Off (Vol)
Drivers Rearview Mirror (W/S Mount)
Fire Extinguisher, Automatic System
Tool Kit



220s

COBALT BOATS

 GATEWAY
SERIES

COBALT 220s

The details of a great boat accumulate in ways that you may never notice. But feel free to imagine.

Come aboard the 220S and experience the comfort and convenience typically found only in far larger boats. Experience a spaciousness that maximizes flexibility in your use of the boat, thanks to Free Space Reclamation (FSR), Cobalt's studied minimization of heretofore unused space. The 220S makes idealized use of every square inch of its wide and sturdy stance, the stadium seating key to the easy accommodation of a dozen guests and their gear. And the swim step, of course, Cobalt's game-changing, patented contribution to safety, convenience, and accessibility makes boarding a breeze. Memories gather naturally under the 220's optional aluminum wakeboard arch – simply foldable, by the way – an addition that makes your boat as athletic as it is roomy.

Mention the word "athletic" and the 220S steps up to the plate. Big fun – the extended running surface hull design provides explosive hole-shots, easy and extended zooming, the tight, high-speed turns skiers and boarders want – while affording you some remarkable efficiencies in fuel management.

The S interior seating configuration combines an oversized, all-in-one cockpit layout with the amazing on-water performance that has become synonymous with Cobalt. Your co-captain can face forward in the traditional manner, or flip the seat down easily transforming the cockpit into a massive arena-style seating arrangement. The choice is yours.



220s



220s



The "S" Sport seating interior configuration offers the port-side passenger a choice of facing forward or aft. Shown in the Saddle interior color selection.

220s



COBALT 220s



SPECIFICATIONS

Length Overall w/o Swim Platform	21' 4"	6.50 m
Length Overall w/ Swim Pla'tform	22' 10"	6.96 m
Beam	8' 6"	2.59 m
Deadrise at Transom	20°	20°
Fuel Capacity	52 gal.	197 L
Bridge Clearance w/o Bimini	3' 11"	1.19 m
Bridge Clearance w/Tower	6' 10"	2.08 m
Draft Drive Up	24"	.61m
Draft Drive Down	37"	.94m
Dry Weight	3700 lbs.	1678 kg
Boat Certified Capacity	12 persons	
Boat Certified Capacity w/gear	1695 lbs.	768 kg

VOLVO PENTA STERNDRIVE POWER

V6-240C-G DP	240 hp	149 PkW
V6-240C-G SX	240 hp	179 PkW
V6-240G DP (non-cat)	240 hp	149 PkW
V6-240G SX (non-cat)	240 hp	149 PkW
V6-280C-G DP	280 hp	209 PkW
V8-300C-G DP	300 hp	224 PkW
V8-300CE-G DP	300 hp	224 PkW
V8-350C-G DP	350 hp	261 PkW
V8-350CE-G DP	350 hp	261 PkW

MERCURISER STERNDRIVE POWER

4.5 L MPI ECT-250 Alpha	250 hp	186 PkW
4.5 L MPI ECT-250 B3	250 hp	186 PkW
6.2 L MPI ECT DTS-300 B3	300 hp	224 PkW
6.2 L MPI ECT DTS-350 B3	350 hp	261 PkW
6.2 L MPI ECT-300 B3	300 hp	224 PkW
6.2 L MPI ECT-350 B3	350 hp	261 PkW

COBALT 220 S



STANDARD EQUIPMENT

Dash and Instrumentation

Accessory Power Plug - 12 Volt
Aluminum Dash Panels
Composite Helm Eyebrow,
Custom Stitching
Depth & Water/Air Temp Gauge Pkg.
Hour Meter
Leather Steering Wheel w/
Auto Leveling Hub
Stainless Steel Switches

Exterior

Anchor Locker
Bow Scuff Plate, Stainless Steel
Extended Running Surface
Flip-Down Swim Step w/o Ladder
Graphics, Molded-In Gelcoat
Midship Cleats
Ski Tow Eye, Stainless Steel
SS Tubular Platform Perimeter Rail
Stainless Top Trim Windshield

Interior

S Sport Seating Configuration
Aft Facing Rumble Seat
Aft Sunpad w/Walk-Thru Transom
Aft Walk-Thru Carpet
Bow Walk-Thru Door
Carpet, 40 oz., Snap-In w/Neoprene Back
Removable Bow & Cockpit Carpet
Removable Ice Chest
Seating Varadense Comfort
Seating, Helm Flip-Up

Stereo

iPod/USB/MP3 Port
Sound System, Bluetooth, w/6 Spkrs.
Stereo Remote, Dash
Stereo Remote, Transom (Prem. Sound)

Structure, Safety, & Performance

10/5/3 Year Warranty Protection
Battery Switch, Single
Circuit Breaker Protected Elec System

Composite Floor
Composite Seat Bases
Composite Transom
Fiberglass Cockpit Liner
Fiberglass Stringer System
Fire Extinguisher, Manual
Ignition Safety Switch
Kevlar Reinforced Hull
Stainless Steel Windshield Braces
Through Prop Exhaust

OPTIONAL EQUIPMENT

Canvas

Bimini
Bow Tonneau Cover
Cockpit Tonneau Cover
Mooring Cover

Dash and Instrumentation

Compass
GPS, Garmin 7607, Touch Screen
Rudder Indicator, Merc
Rudder Indicator, Volvo
XM Weather

Engine Options

Active Trim, Merc (requires DTS)
Anti-Corrosion System (Vol
200-300hp, Mer-Alpha)
Ocean-X (Volvo)
Seacore (Merc)
Tow Mode (Volvo EVC)

Exterior

Arch Elec, Alum. Folding w/Bimini
Arch, Alum, Folding w/Bimini
COBALT Oval Logo, Recessed
Docking Lights-Stainless Steel
Fender Clips w/Line (4)
Flagpole w/Flag
Sof-Trac Marine Mat, Swim Platform
Transhield Shipping Cover
Transom Tilt Switch
Underwater Lighting

Wakeboard Racks, Elite (Alum)
Wakeboard Racks, Triton

Interior

Aft Walk-Thru Filler Cushions
Aft Walk-Thru Gate
Air Compressor w/Holder
Bow Center Cushion Insert
Dinette Table w/cockpit receptacle
Floor Covering, Sea Grass
LED Interior Accent Lighting (RGB)
Remote Courtesy Lights w/key fob
Sof-Trac Marine Mat, Cockpit
Throw Pillows, Weighted (10)
Throw Pillows, Weighted (4)

Stereo

Prem Sound w/Transom
& Arch Spkrs-1 pr.
Prem Sound w/Transom Spkrs.
Satellite Radio System
Stereo Remote, Transom (Std. Sound)

Structure, Safety, & Performance

Battery Maintainer/Charger, 110v
Battery Maintainer/Charger, 220v
Battery Switch, Dual w/ACR
CE Requirements w/Auto Fire Extinguisher
Cruise Control-Smart Tow (Merc DTS)
Cruise Control-Zero Off (Vol)
Drivers Rearview Mirror (W/S Mount)
Fire Extinguisher, Automatic System
Tool Kit



A36

COBALT BOATS

A SERIES

**Act as though cutting edge design
and luxury appointments are chief
requirements to life.**

With the all new A36 you'll come to understand the degree to which your new Cobalt sets you apart from any semblance of the crowd. As, soon enough, the exuberance of your first family cruise becomes the remembered moments of a lifetime on the water.

Begin with Cobalt's legendary extended running surface and its consequent quicker planing, firm and true turns, and minimized bow rise. At high speeds feel the A36's exceptional stability, it's effortless coming on rails. Give your guests the softest of rides in the roughest of seas and then, on a quiet entry back to the harbor, watch the longing looks coming your way.

Special to the A Series is the hydraulic swim platform which lowers well below the water's surface. A perfect home base to water-borne activity, or functioning as a full-beam step for those eager kiddos jumping aboard.

From the cockpit to cabin to bow lounges, the A36 interior bespeaks an envelopment of luxury. Buttery smooth vinyls, rich textures, stainless steel accents all marry together to create this one of a kind model.

Live the life



A36



A36



A36





COBALT A 36





COBALT A36



SPECIFICATIONS

Length Overall w/ Swim Platform	35' 6"	10.82 m
Beam	11' 2"	3.40 m
Interior Cockpit Width	110"	2.81 m
Deadrise at Transom	22°	22°
Fuel Capacity - Gasoline	189 gal.	715 L
Fuel Capacity - Diesel	192 gal.	727 L
Freshwater Capacity	27 gal.	102 L
Holding Tank Capacity	10 gal.	38 L
Bridge Clearance	9' 1"	2.77
Draft Drive Up	31"	.78 m
Draft Drive Down	42"	1.07 m
Dry Weight	16,000	7,257 kg
Boat Certified Capacity	Yacht Certified	
Boat Certified Capacity w/gear	Yacht Certified	

VOLVO PENTA STERNDRIVE POWER

Twin Diesel D6 370	370 hp	276 PkW
Twin V8-380CE DP	380 hp	283 PkW
Twin V8-430CE DP	430 hp	321 PkW



STANDARD EQUIPMENT

Dash and Instrumentation

Compass, Digital
Depth & Water/Air Temp Pkg.
Digital Spyder Controls
Glass Cockpit, Volvo
Premium Black Leather/
SS Steering Wheel
Windshield Wiper, Stbd.

Engine Options

Active Corrosion Protection-Vol Diesel
E-Key, Volvo Diesel
EVC w/PTA & Cruise (Volvo)
Trip Computer (Volvo EVC)

Exterior

Bow Rails, Stainless Steel
Dinette Table, Cockpit
Direct Bond Edge-Style Windshield
Fender Clips w/Line (6)
Foredeck Sunpad Filler Cushion Set
Galley w/Sink, Cockpit
LED Lighting & Dual Spkrs., Coupe Top
Motorbox Actuator, Electric
Snap-In Carpet, Cockpit
Stainless Steel Cupholders
Swim Platform w/Ladder, Hydraulic
Transhield Shipping Cover

Interior

Cabin Skylights
Cabinetry, Gray Driftwood
Dinette Table, Cabin
Fiberglass Liner w/Sea Grass Floor Cover
Head w/Sink & VacuFlush Toilet
Integrated Cabin Filler Cushion
LED Overhead Lighting, Cabin
Panoramic Cabin Windows
Suspended Cabin Headliner

Stereo

Custom Acoustic Cabin Spkr. Covers
iPod/USB/MP3 Port
Premium Sound System w/
Transom Remote & Spkrs.
Stereo Remote, Dash
TV Antenna & Cable Hook-Up

Structure, Safety, & Performance

10/5/3 Year Warranty Protection
Battery Charger, 60 amp
CO Monitor
Composite Floor
Composite Transom
Fiberglass Cockpit Liner
Fiberglass Stringer System
Fire Extinguisher, Manual (2)
Galvanic Protection
Ignition Safety Switch
Kevlar Reinforced Hull
Shorepower-110v, Dual 30 amp
Tool Kit
Trim Tabs, Electric w/Autoglide System
Windlass, All Chain w/Anchor

OPTIONAL EQUIPMENT

Canvas

Bow Tonneau Cover
Electric SureShade, Coupe Top
Full Canvas Enclosure Package

Dash and Instrumentation

Compass, Magnetic
Radar, Garmin 24" HD Dome
Radar, Garmin 24" HD Dome w/KVH
Radar, Garmin 48" Open Array
Radar, Garmin 48" Open Array w/KVH
VHF Radio w/Antenna

Engine Options

Active Corrosion Protection-Vol Gas
Autopilot (Volvo)
Joystick Sterndrive w/E Key-Volvo
Ocean-X (Volvo)

Exterior

Barbeque Grill, Cockpit
Coupe Top w/LED Lighting (std)
Docking Lights
Flagpole w/Flag
Floor Covering, Sea Grass-Cockpit
Fresh Water Washdown, Bow
Refrigerator, Cockpit
Sof-Trac Mat, Swim Platform
Spotlight, Remote
Transom Shower (Hot/Cold)
Underwater Lighting

Interior

Air Conditioning/Self-Priming 16k
Air Conditioning16k
Gray Water System
LED Interior Accent Lighting (RGB)
Remote Courtesy Lights w/key fob
Sof-Trac Mat, Cockpit
Throw Pillows, Weighted (10)
Throw Pillows, Weighted (4)
VacuFlush Toilet w/Macerator

Stereo

Cabin Entertainment Package (TV/DVD)
Satellite Radio System
Satellite TV
Satellite Weather System
TV w/Lift, Cockpit Galley
TV, 110v - Cabin

Structure, Safety, & Performance

CE Requirements
Fire Extinguisher, Automatic System
Fire Extinguisher, Automatic
System (generator)
Generator (Diesel) 6.0kW w/Sound Shield
Generator (Gas) 6.5kW w/Sound Shield
Shorepower-220v, Dual 30 amp
Windlass (std) w/Chain Counter



A40 Coupe

COBALT BOATS

ASERIES

COBALT *A40* Coupe

It just keeps getting better, the *A40* Coupe.

The A40 Coupe, the grand performance day boat that features unmatched elegance, luxury and class. Stemming from the same foundational roots as her sister, the A40 Hard-Top, the Coupe version features a sleek windshield and integrated top design. The 12' beam provides ample roominess for the entire crew and their gear. Bring it on board and you will find the perfect nesting place for each and every item necessary for big-day boating. The Coupe features impeccable exterior lines accenting the fiberglass coupe top and navigation equipment shelf, a convenient sliding sunroof, and an available retractable shade integrated seamlessly into the design. The A40 Coupe provides Cobalt customers the freedom of choice when it comes to the style of day boating they prefer: the open air feel of the hard-top or the comfortable convertibility of the coupe. The beauty is, the choice is always yours.



A40 Coupe









COBALT A40 coupe





COBALT A40 coupe



SPECIFICATIONS

Length Overall w/ Swim Platform	39' 6"	12.04 m
Beam	12' 0"	3.66 m
Interior Cockpit Width	10' 3"	3.12 m
Deadrise at Transom	20	20
Fuel Capacity - Gasoline	225 gal.	852 L
Fuel Capacity - Diesel	248 gal.	939 L
Freshwater Capacity	50 gal	189 L
Holding Tank Capacity	28 gal.	106 L
Bridge Clearance	13'9"	4.19 m
Draft Drive Up	33"	.84 m
Draft Drive Down	48"	1.22 m
Dry Weight	19,926 lbs.	9,038 kg
Boat Certified Capacity	Yacht Certified	
Boat Certified Capacity w/gear	Yacht Certified	

VOLVO PENTA STERNDRIVE POWER

Twin Diesel D6 400	400 hp	298 PkW
--------------------	--------	---------

COBALT A40 coupe



STANDARD EQUIPMENT

Dash and Instrumentation

Compass, Digital
Depth & Water/Air Temp Pkg.
Glass Cockpit, Volvo
Illuminated Stainless Steel Switches
Premium Black Leather/
SS Steering Wheel
Remote Helm Battery Switches
Windshield Wiper, Stbd.

Engine Options

Active Corrosion Protection-Vol Diesel
EVC w/PTA & Cruise (Volvo)
Trip Computer (Volvo EVC)

Exterior

Aft Walk-Thru Gates
Bow Rails, Stainless Steel, 10"
Fender Clips w/Line (6)
Foredeck Sunpads w/
Integrated Lounge Position
Frameless Walk-Thru Windshield
Galley w/Sink & Refrigerator, Cockpit
Motorbox Actuator, Electric
Oversized Deck Hatch
Snap-In Carpet, Cockpit
Stainless Steel Cupholders
Teak Accent Package
Transom Storage Lockers

Interior

Air Conditioning/Heating, Cabin
Cabin Skylights
Cabinetry, Espresso, Matte Finish
Dinette Table, Cabin
Fiberglass Liner w/Sisal Floor Covering
Galley w/Sink & Refrigerator
Head w/Sink, Shower & VacuFlush Toilet
LED Overhead Lighting, Cabin
Microwave, 110v
Mid-Berth Filler Cushion
Panoramic Windows w/Opening Hatch
Suspended Cabin Headliner
V-Berth Filler Cushion

Stereo

Cabin Entertainment
Package, Main Cabin
Custom Acoustic Speaker Covers

iPod/USB/MP3 Port
Premium Sound System w/
Transom Remote & Spkrs.
Stereo Remote, Dash
TV Antenna & Cable Hook-Up

Structure, Safety, & Performance

10/5/3 Year Warranty Protection
Battery Charger, 60 amp
Circuit Breaker Protected Elec System
CO Monitor (2)
Composite Floor
Composite Transom
Fiberglass Cockpit Liner
Fiberglass Stringer System
Fire Extinguisher, Automatic
System (generator)
Fire Extinguisher, Automatic System-Dual
Fire Extinguisher, Manual (2)
Galvanic Protection
Generator (Diesel) 6.0kW w/Sound Shield
Ignition Safety Switch
Kevlar Reinforced Hull
Shorepower-110v, Dual 30 amp
Stainless Steel Windshield Braces
Tool Kit
Trim Tabs, Electric w/Autoglide System
Windlass, All Chain w/Anchor

OPTIONAL EQUIPMENT

Canvas

Electric Sureshade
Full Canvas Enclosure Pkg.

Dash and Instrumentation

Compass, Magnetic
Radar, Garmin 24" HD Dome
Radar, Garmin 24" HD Dome w/KVH
Radar, Garmin 48" Open Array
Radar, Garmin 48" Open Array w/KVH
VHF Radio w/Antenna, Garmin
Windshield Wiper, Port

Engine Options

Autopilot (Volvo)
Joystick Sterndrive (EVC)-Volvo

Exterior

Barbeque Grill ,Cockpit
Cleats, Port & Stbd. (add'l)

Coupe Top Vertical Legs, Black
Coupe Top Vertical Legs, White
Dinette Table, Cockpit
Docking Lights
Flagpole w/Flag
Floor Covering, Sea Grass
Fresh Water Washdown, Bow
Ice Maker, Cockpit (in lieu
of storage console)
Refrigerator, Cockpit (in lieu
of storage console)
Spotlight, Remote
Swim Platform w/Ladder, Hydraulic
Transom Shower (Hot/Cold)
Underwater Lighting

Interior

Air Conditioning/Heat Self-Prime,Cabin
Air Conditioning/Heat Self-Prime,Cockpit
Air Conditioning/Heating, Cockpit
Central Vacuum System
Custom Wood Floor, Main Cabin
Gray Water System
LED Interior Accent Lighting (RGB)
Remote Courtesy Lights w/key fob
Throw Pillows, Weighted (10)
Throw Pillows, Weighted (4)
VacuFlush Toilet w/Macerator

Stereo

Satellite Radio System
Satellite TV
Satellite Weather System
TV, 12v w/HDMI Input, Mid Cabin
TV, Cockpit Galley (removable)

Structure, Safety, & Performance

CE Requirements
Shorepower-220v, Dual 30 amp
Windlass (std) w/Chain Counter



R3

COBALT BOATS

R SERIES

**Exceeded expectations? Check.
Surpassed your wildest dreams?
Check. Check.**

This magnificent off-road vehicle has made its mark in the 23 foot segment. Yes, she is expansive, and then some, but the Cobalt R3 is much more than your typical 23 footer.

Let us begin with her physique. The R3 exterior profile is sleek and low. The transom, platform design and aft sunpad are sculpted beautifully creating a smooth and sexy profile. The sunpad backrest is convertible, and the rumble seat is simple and effective.

As we step aboard through the walk-through transom, you will notice the cockpit has an interior beam measurement that is over a foot wider than any competitive runabout. This is no illusion. This interior expansion, Free Space Reclamation, is exactly what Cobalt's build process creates. It is most noticeable in the cockpit, which is adorned with seating that wraps around the transom and the port side. The wrap-around yacht style seating is exclusive to a boat her size. Notice the attention to detail in the upholstery with the stitching in perfect harmony. The design of the passenger seat provides a completely innovative convertibility to the cockpit.

At the helm, the aluminum dash panels, stainless switches, and form-fitted vinyl eyebrow are all highlighted by the 5" digital gauges with multi-function displays. The six-speaker Rockford Fosgate stereo with Bluetooth, provides fidelity the audiophiles will appreciate. Feel the leather wrapped wheel, sit in comfort at the helm and utilize the perfectly placed armrest, and ergonomically positioned footrest. Everything fits, everything Cobalt.

The competition doesn't belong in the same room.



R3





R3





COBALT R3



SPECIFICATIONS

Length Overall w/Swim Platform	23' 10"	7.26m
Beam	8' 6"	2.59 m
Interior Cockpit Width	95"	2.41 m
Deadrise at Transom	21°	21°
Fuel Capacity	48 gal.	182 L
Freshwater Capacity	10 gal.	38 L
Bridge Clearance w/o Bimini	62"	1.57 m
Bridge Clearance w/Bimini	89"	2.26 m
Bridge Clearance w/Arch or Tower	96"	2.44 m
Draft Drive Up	21"	.53 m
Draft Drive Down	37"	.94 m
Dry Weight	4450 lbs.	2018 kg
Boat Certified Capacity	12 persons	
Boat Certified Capacity w/gear	1800 lbs.	816 kg

VOLVO PENTA STERNDRIVE POWER

V8-300CE-G EVC DP	300 hp	221 PkW
V8-350CE-G EVC DP	350 hp	261 PkW
V8-380CE EVC DP	380 hp	283 PkW
V8-430CE EVC DP	430 hp	321 PkW

MERCURISER STERNDRIVE POWER

6.2 L MPI ECT DTS-300 B3	300 hp	221 PkW
6.2 L MPI ECT DTS-350 B3	350 hp	261 PkW
8.2 Mag ECT DTS B3X	380 hp	283 PkW
8.2 Mag HO ECT DTS B3X	430 hp	321 PkW

COBALT R3



STANDARD EQUIPMENT

Dash and Instrumentation

Accessory Power Plug - 12 Volt
Black Leather/SS Steering Wheel
Color-Matched Aluminum Dash Panels
Composite Helm Eyebrow,
Custom Stitching
Dash Perimeter SS Accent Trim
Depth & Water Temp Pkg.
Glass Cockpit, Dual Garmin 7607
Gloss Black Dash Console w/SS Accents
Hour Meter
Illuminated Switch Panel/Switches
Stainless Steel Switches

Engine Options

DTS (Merc)
EVC w/PTA & Cruise (Volvo)

Exterior

Anchor Locker
Bow Scuff Plate, Stainless Steel
Extended Running Surface
Fender Clips w/Line (4)
Graphics, Molded-In Gelcoat
Midship Cleats
Ski Pylon - Stainless Steel
SS Tubular Platform Perimeter Rail
Stainless Steel Engine Vents
Stainless Top Trim Windshield
Swim Platform w/Flip-Down Swim Step

Interior

Aft Facing Rumble Seat
Aft Sunpad Backrest SS Accent Rail
Aft Walk-Thru Carpet
Bow Armrests
Bow Walk-Thru Doors
Carpet, 40 oz., Snap-In w/Neoprene Back
Del Mar Helm Capt. Chair
Passenger Seat Flip Backrest System
Removable Bow & Cockpit Carpet
Seating Varadense Comfort
Sundeck Convertible Lounger
Trash Receptacle, Cockpit

Stereo

Custom Acoustic Speaker Covers
iPod/USB/MP3 Port
Sound System, Bluetooth, w/6 Spkrs.

Stereo Remote, Dash
Stereo Remote, Transom (Prem. Sound)

Structure, Safety, & Performance

10/5/3 Year Warranty Protection
Battery Switch, Single
Circuit Breaker Protected Elec System
Composite Floor
Composite Transom
Fiberglass Cockpit Liner
Fiberglass Stringer System
Fire Extinguisher, Manual
Ignition Safety Switch
Kevlar Reinforced Hull
Stainless Steel Windshield Braces
Through Prop Exhaust

OPTIONAL EQUIPMENT

Canvas

Bimini, Premium
Bimini, Premium Easy-Fold
Bow Tonneau Cover
Cockpit Tonneau Cover
Mooring Cover

Dash and Instrumentation

Makassar Dash/Interior Trim Pkg.
Rudder Indicator, Merc
Rudder Indicator, Volvo
XM Weather

Engine Options

Active Trim, Merc (requires DTS)
Anti-Corrosion System (Vol
200-300hp, Mer-Alpha)
Ocean-X (Volvo)
Seacore (Merc)
Tow Mode (Volvo EVC)

Exterior

Arch, Alum Folding w/Bimini
Arch, Elec Alum Folding w/Bimini
Arch, Elec Folding w/Rotating Sunshade
Arch, Folding w/Rotating Sunshade
Arch, SS/Alum w/Sunshade
COBALT Oval Logo, Recessed
Docking Lights-Stainless Steel
Flagpole w/Flag
Motorbox Actuator
Sof-Trac Marine Mat, Swim Platform

Swim Platform Transom Lighting
Transhield Shipping Cover
Transom Shower
Transom Tilt Switch
Umbrella w/Receiver (ski pylon mounted)
Underwater Lighting
Wakeboard Racks, Elite (Alum)
Wakeboard Racks, Triton

Interior

Air Compressor w/Holder
Bow Center Cushion Insert
Captain's Chair, Power
Dinette Table w/CP & Sunpad Receptacle
Floor Covering, Sea Grass
LED Interior Accent Lighting (RGB)
Quilted Pattern Upholstery Accents
Remote Courtesy Lights w/key fob
Sof-Trac Marine Mat, Cockpit
Stainless Steel Foot Tread (helm only)
Sunpad Filler Cushion (w/Dinette)
Sunpad Filler Cushion (w/o Dinette)
Throw Pillows, Weighted (10)
Throw Pillows, Weighted (4)

Stereo

Plat Sound w/Transom & Arch Spkrs-2 pr.
Plat Sound w/Transom Spkrs.
Prem Sound w/Transom
& Arch Spkrs-1 pr.
Prem Sound w/Transom Spkrs.
Satellite Radio System
Stereo Remote, Transom (Std. Sound)

Structure, Safety, & Performance

Battery Maintainer/Charger, 110v
Battery Maintainer/Charger, 220v
Battery Switch, Dual w/ACR
Captain's Call Exhaust
Captain's Call Plus (w/Mufflers)
CE Requirements w/Automatic
Fire Extinguisher
Cruise Control-Smart Tow (Merc DTS)
Cruise Control-Zero Off (Vol EVC)
Drivers Rearview Mirror (W/S Mount)
Fire Extinguisher, Automatic System
Tool Kit
Trim Tabs w/Indicators
Windlass, All Chain w/Anchor



R5

COBALT BOATS

R SERIES

COBALT *R5*

Attention, perfectionists. This one is for you.

Let us introduce you to the Cobalt R5.

No matter the activity of the day, the Cobalt R5 steps up to the plate bringing class and style. At first glance, its exterior profile will catch the eyes of all around. Sleek. Powerful. Aggressive. Notice the graphics – bold, vibrant. But let's not be materialistic here. This legendary ride is worth noting: infectious. That is the word we would use – so infectious that with just one nudge of the wheel and a tight turn, you will be hooked to its smooth nature.

With all the luxury interior appointments that one would expect from a Cobalt, the inside speaks of timeless good taste. The transom is walk-thru, of course. The back-rest is convertible, and the space forward is wide and wider still, followed with yacht-esque wraparound seating. This seating configuration, by the way, belongs only to Cobalt in boats of the R5's size. The twice-wide passenger seat forward makes the cockpit even more flexible in its service of a good time. A console door, elegant in its Makassar grain look and crafted vinyl, opens to a head larger above and all-around than any other boat in the class.

The helm gleams in hand craftsmanship, in oil rubbed ebony Makassar trim and duotone aluminum dash panels and switches of stainless steel and five-inch digital gauges with multi-function readouts and, over all, a form-fitted eyebrow in everlasting vinyl. The wheel wraps in leather: one of the most time-honored of Cobalt traditions, this masterpiece of a steering wheel. Our owners have always insisted on comfort and convenience and accessibility -- "ergonomics" to our designers -- and so the R5's armrests and footrests and controls and cupholders and every last little amenity aboard arrives with a form and a function just too ergo for words. And one more name to drop: the Rockford Fosgate stereo, optimized and ready, as we say, to crank.

Need we say more?



R5





R5





COBALT R5



SPECIFICATIONS

Length Overall w/Swim Platform	25' 8"	7.82 m
Beam	8' 6"	2.59 m
Interior Cockpit Width	95"	2.41 m
Deadrise at Transom	21°	21°
Fuel Capacity	48 gal.	182 L
Freshwater Capacity	10 gal.	38 L
Bridge Clearance w/o Bimini	64"	1.63 m
Bridge Clearance w/Bimini	91"	2.31 m
Bridge Clearance w/Arch or Tower	98"	2.49 m
Draft Drive Up	21"	.53 m
Draft Drive Down	37"	.94 m
Dry Weight	4880 lbs.	2214 kg
Boat Certified Capacity	14 persons	
Boat Certified Capacity w/gear	2250 lbs.	1021 kg

VOLVO PENTA STERNDRIVE POWER

V8-300CE-G EVC DP	300 hp	221 PkW
V8-350CE-G EVC DP	350 hp	261 PkW
V8-380CE EVC DP	380 hp	283 PkW
V8-430CE EVC DP	430 hp	321 PkW

MERCUISER STERNDRIVE POWER

6.2 L MPI ECT DTS-300 B3	300 hp	221 PkW
6.2 L MPI ECT DTS-350 B3	350 hp	261 PkW
8.2 Mag ECT DTS B3X	380 hp	283 PkW
8.2 Mag HO ECT DTS B3X	430 hp	321 PkW

COBALT R5



STANDARD EQUIPMENT

Dash and Instrumentation

Accessory Power Plug - 12 Volt
Black Leather/SS Steering Wheel
Color-Matched Aluminum Dash Panels
Composite Helm Eyebrow,
Custom Stitching
Dash Perimeter SS Accent
Depth & Water Temp Pkg.
Glass Cockpit, Dual Garmin 7607
Gloss Black Dash Console w/SS Accents
Hour Meter
Illuminated Switch Panel/Switches
Stainless Steel Switches

Engine Options

DTS (Merc)
EVC w/PTA & Cruise (Volvo)

Exterior

Anchor Locker
Bow Scuff Plate, Stainless Steel
Extended Running Surface
Fender Clips w/Line (4)
Graphics, Molded-In Gelcoat
Midship Cleats
Ski Pylon - Stainless Steel
Sky Light (Head Compartment)
SS Tubular Platform Perimeter Rail
Stainless Steel Engine Vents
Stainless Top Trim Windshield
Swim Platform w/Flip-Down Swim Step

Interior

Aft Facing Rumble Seat
Aft Sunpad Backrest SS Accent Rail
Aft Walk-Thru Carpet
Bow Cushion Insert, Stbd.
Bow Walk-Thru Doors
Carpet, 40 oz., Snap-In w/Neoprene Back
Del Mar Helm Capt. Chair
Head w/Porta Potti
Passenger Seat Flip Backrest System
Removable Bow & Cockpit Carpet
Seating Varadense Comfort
Sundeck Convertible Lounger
Trash Receptacle, Cockpit

Stereo

Custom Acoustic Speaker Covers
iPod/USB/MP3 Port
Sound System, Bluetooth, w/6 Spkr.
Stereo Remote, Dash

Stereo Remote, Transom (Prem. Sound)

Structure, Safety, & Performance

10/5/3 Year Warranty Protection
Battery Switch, Single
Circuit Breaker Protected Elec System
Composite Floor
Composite Transom
Fiberglass Cockpit Liner
Fiberglass Stringer System
Fire Extinguisher, Manual
Ignition Safety Switch
Kevlar Reinforced Hull
Stainless Steel Windshield Braces
Through Prop Exhaust

OPTIONAL EQUIPMENT

Canvas

Bimini, Premium
Bimini, Premium Easy-Fold
Bow Tonneau Cover
Cockpit Tonneau Cover
Mooring Cover

Dash and Instrumentation

Makassar Dash/Interior Trim Pkg.
Rudder Indicator, Merc
Rudder Indicator, Volvo
XM Weather

Engine Options

Active Trim, Merc (requires DTS)
Anti-Corrosion System (Vol
200-300hp, Mer-Alpha)
Ocean-X (Volvo)
Seacore (Merc)
Tow Mode (Volvo EVC)

Exterior

Arch, Alum, Folding w/Bimini
Arch, Elec Folding w/Rotating Sunshade
Arch, Elec, Alum Folding w/Bimini
Arch, Folding w/Rotating Sunshade
Arch, SS/Alum w/Sunshade
COBALT Oval Logo, Recessed
Docking Lights-Stainless Steel
Flagpole w/Flag
Motorbox Actuator
Portal Light (1 in Head Compartment)
Sof-Trac Mat, Flip-Down Swim Step
Swim Platform Transom Lighting
Transhield Shipping Cover
Transom Shower

Transom Tilt Switch
Umbrella w/Receiver (ski pylon mounted)
Underwater Lighting
Wakeboard Racks, Elite (Alum)
Wakeboard Racks, Triton

Interior

Air Compressor w/Holder
Bow Center Cushion Insert
Captain's Chair, Power
Dinette Table w/CP & Sunpad Receptacle
Floor Covering, Sea Grass
Grey Water System
Head w/Electric Porcelain Toilet
Head w/Electric Porcelain, Macerator
Head w/Pump Out Porta-Potti
Head w/Pump Out Porta-Potti, Macerator
LED Interior Accent Lighting (RGB)
Quilted Pattern Upholstery Accents
Remote Courtesy Lights w/key fob
Sink Console (head compartment)
Sof-Trac Marine Mat, Cockpit
Stainless Steel Foot Tread (helm only)
Sunpad Filler Cushion (w/Dinette)
Sunpad Filler Cushion (w/o Dinette)
Throw Pillows, Weighted (10)
Throw Pillows, Weighted (4)

Stereo

Plat Sound w/Transom & Arch Spkrs-2 pr.
Plat Sound w/Transom Spkrs.
Prem Sound w/Transom
& Arch Spkrs-1 pr.
Prem Sound w/Transom Spkrs.
Satellite Radio System
Stereo Remote, Transom (Std. Sound)

Structure, Safety, & Performance

Battery Maintainer/Charger, 110v
Battery Maintainer/Charger, 220v
Battery Switch, Dual w/ACR
Captain's Call Exhaust
Captain's Call Plus (w/Mufflers)
CE Requirements w/Automatic
Fire Extinguisher
Cruise Control-Smart Tow (Merc DTS)
Cruise Control-Zero Off (Vol EVC)
Drivers Rearview Mirror (W/S Mount)
Fire Extinguisher, Automatic System
Tool Kit
Trim Tabs w/Indicators
Windlass, All Chain w/Anchor



R7

COBALT BOATS

R SERIES

COBALT R7

Fashion meet function.

It is all here. The Cobalt R7 embodies the same highly appointed upholstery, maximized cockpit breadth, seating versatility. This list goes on and on, but the R7 deserves even more gloat, for she is the ultimate bowrider. Hold on, let's get this party started.

The bow area, spacious. Thanks to a term we have deemed "Free Space Reclamation", this interior expansion is exactly what Cobalt's build process creates. It is most noticeable in the cockpit, which is adorned with seating that wraps around the transom and the port side. The cockpit, expansive. The convertibility of the seating configuration, ingenious. The elongated port side seating gives the R7 room for the crew – and with the yacht-style seating, there are many ways to ship-shape the conversation. With the extended length also comes a phenomenal increase in storage area. Bring it on board, and there is a compartmentalized place to stow it away.

And the ride, it is a legendary one. So legendary that it placed Cobalt #1 in ride comfort. Opulent luxury combined with incredible value. The R7 hits the mark with the perfect combination of both. The truth is, Cobalt is the solution when it comes to big water day boating. The R7 reaffirms that truth.



R7



R7





COBALT R7



SPECIFICATIONS

Length Overall w/Swim Platform	27' 6"	8.38 m
Beam	8' 6"	2.59 m
Interior Cockpit Width	95"	2.41 m
Deadrise at Transom	21°	21°
Fuel Capacity	78 gal.	295 L
Freshwater Capacity	10 gal.	38 L
Bridge Clearance w/o Bimini	64"	1.63 m
Bridge Clearance w/Bimini	91"	2.31 m
Bridge Clearance w/Arch or Tower	98"	2.49 m
Draft Drive Up	21"	.53 m
Draft Drive Down	37"	.94 m
Dry Weight	5600 lbs.	2540 kg
Boat Certified Capacity	Yacht Certified	
Boat Certified Capacity w/gear	Yacht Certified	

VOLVO PENTA STERNDRIVE POWER

V8-300CE-G EVC DP	300 hp	221 PkW
V8-350CE-G EVC DP	350 hp	261 PkW
V8-380CE EVC DP	380 hp	283 PkW
V8-430CE EVC DP	430 hp	321 PkW

MERCURUISER STERNDRIVE POWER

V8-300CE-G EVC DP	300 hp	221 PkW
V8-350CE-G EVC DP	350 hp	261 PkW
V8-380CE EVC DP	380 hp	283 PkW
V8-430CE EVC DP	430 hp	321 PkW

COBALT R7



STANDARD EQUIPMENT

Dash and Instrumentation

- Accessory Power Plug - 12 Volt
- Black Leather/SS Steering Wheel
- Color-Matched Aluminum Dash Panels
- Composite Helm Eyebrow,
- Custom Stitching
- Dash Perimeter SS Accent Trim
- Depth & Water Gauge Pkg.
- Glass Cockpit, Dual Garmin 7607
- Gloss Black Dash Console w/SS Accents
- Hour Meter
- Illuminated Switch Panel/Switches
- Stainless Steel Switches

Engine Options

- DTS (Merc)
- EVC w/PTA & Cruise (Volvo)

Exterior

- Anchor Locker
- Bow Scuff Plate, Stainless Steel
- Extended Running Surface
- Fender Clips w/Line (4)
- Graphics, Molded-In Gelcoat
- Midship Cleats
- Ski Pylon - Stainless Steel
- Sky Light (Head Compartment)
- SS Tubular Platform Perimeter Rail
- Stainless Steel Engine Vents
- Stainless Top Trim Windshield
- Swim Platform w/Flip-Down Swim Step

Interior

- Aft Facing Rumble Seat
- Aft Sunpad Backrest SS Accent Rail
- Aft Walk-Thru Carpet
- Bow Cushion Insert, Stbd.
- Bow Walk-Thru Doors
- Carpet, 40 oz., Snap-In w/Neoprene Back
- Console, Cockpit
- Del Mar Helm Capt. Chair
- Head w/Porta Potti
- Passenger Seat Flip Backrest System
- Removable Bow & Cockpit Carpet
- Seating Varadense Comfort
- Sundeck Convertible Lounger
- Trash Receptacle, Cockpit

Stereo

- Custom Acoustic Speaker Covers
- iPod/USB/MP3 Port
- Sound System, Bluetooth, w/6 Spkrs.
- Stereo Remote, Dash
- Stereo Remote, Transom (Prem. Sound)

Structure, Safety, & Performance

- 10/5/3 Year Warranty Protection
- Battery Switch, Single
- Circuit Breaker Protected Elec System
- Composite Floor
- Composite Transom
- Fiberglass Cockpit Liner
- Fiberglass Stringer System
- Fire Extinguisher, Manual
- Ignition Safety Switch
- Kevlar Reinforced Hull
- Stainless Steel Windshield Braces
- Through Prop Exhaust

OPTIONAL EQUIPMENT

Canvas

- Bimini, Premium
- Bimini, Premium Easy-Fold
- Bow Tonneau Cover
- Cockpit Tonneau Cover
- Mooring Cover

Dash and Instrumentation

- Makassar Dash/Interior Trim Pkg.
- Rudder Indicator, Merc
- Rudder Indicator, Volvo
- XM Weather

Engine Options

- Active Trim, Merc (requires DTS)
- Anti-Corrosion System (Vol
- 200-300hp, Mer-Alpha)
- Ocean-X (Volvo)
- Seacore (Merc)
- Tow Mode (Volvo EVC)

Exterior

- Arch, Alum, Folding w/Bimini
- Arch, Elec Alum Folding w/Bimini
- Arch, Elec Folding w/Rotating Sunshade
- Arch, Folding w/Rotating Sunshade
- Arch, SS w/Hard Top & Retract Sunshade
- Arch, SS/Alum w/Sunshade
- COBALT Oval Logo, Recessed
- Color-Accented Hard Top Headliner
- Docking Lights-Stainless Steel
- Flagpole w/Flag
- Motorbox Actuator
- Portal Light (1 in Head Compartment)
- Sof-Trac Mat, Flip Down Swim Step
- Swim Platform Transom Lighting
- Transhield Shipping Cover
- Transom Shower
- Transom Tilt Switch

- Umbrella w/Receiver (ski pylon mounted)
- Underwater Lighting
- Wakeboard Racks, Elite (Alum)
- Wakeboard Racks, Triton)

Interior

- Air Compressor w/Holder
- Bow Center Cushion Insert
- Captain's Chair, Power
- Dinette Table w/CP & Sunpad Receptacle
- Floor Covering, Sea Grass
- Grey Water System
- Head w/Electric Porcelain Toilet
- Head w/Electric Porcelain, Macerator
- Head w/Pump Out Porta-Potti
- Head w/Pump Out Porta-Potti, Macerator
- LED Interior Accent Lighting (RGB)
- Quilted Pattern Upholstery Accents
- Remote Courtesy Lights w/key fob
- Sink Console (head compartment)
- Sink Console, Cockpit
- Sof-Trac Marine Mat, Cockpit
- Stainless Steel Foot Tread (helm only)
- Sunpad Filler Cushion (w/Dinette)
- Sunpad Filler Cushion (w/o Dinette)
- Throw Pillows, Weighted (10)
- Throw Pillows, Weighted (4)

Stereo

- Plat Sound w/Transom & Arch Spkrs-2 pr.
- Plat Sound w/Transom Spkrs.
- Prem Sound w/Transom
- & Arch Spkrs-1 pr.
- Prem Sound w/Transom Spkrs.
- Satellite Radio System
- Stereo Remote, Transom (Std. Sound)

Structure, Safety, & Performance

- Battery Maintainer/Charger, 110v
- Battery Maintainer/Charger, 220v
- Battery Switch, Dual w/ACR
- Captain's Call Exhaust
- Captain's Call Plus (w/Mufflers)
- CE Requirements w/Automatic
- Fire Extinguisher
- Cruise Control-Smart Tow (Merc DTS)
- Cruise Control-Zero Off (Volvo EVC)
- Drivers Rearview Mirror (W/S Mount)
- Fire Extinguisher, Automatic System
- Tool Kit
- Trim Tabs w/Indicators
- Windlass, All Chain w/Anchor



R30

COBALT BOATS

*R*SERIES

COBALT *R30*

We made its function – you make its fun.

The newest addition to Cobalt's award-winning line of bowriders is the all-new R30 – a luxurious open-bow day boat designed with "Free Space Reclamation", Cobalt's exclusive technique for cockpit maximization. Elegant and expansive seating options combine with its endless storage spaces to provide the legendary ride that Cobalt is famous for. The largest of the BR Series, the R30 also features an electric actuated swim step that lowers to just below the water's surface. Also astern, find a beach of a sun-pad – large enough for four sun worshipers. And when it comes time to gather around for some good fun and conversation, make use of our convertible layout in the cockpit. Lounge the seats forward or aft, gather around the teak-adorned cockpit table or convert the area into a couch oasis with filler cushions. The port side features a head compartment that doubles as a changing room. At the helm, the captain will find the glass cockpit design provides a birds-eye-view for a safe and enjoyable day on the water – equipped with Garmin screens that keep your systems and route in view at all times. We cannot forget about the available joystick control with its easy maneuverability and simple operation. That's right – easy and simple – all with a touch of class and style. The Cobalt R30.

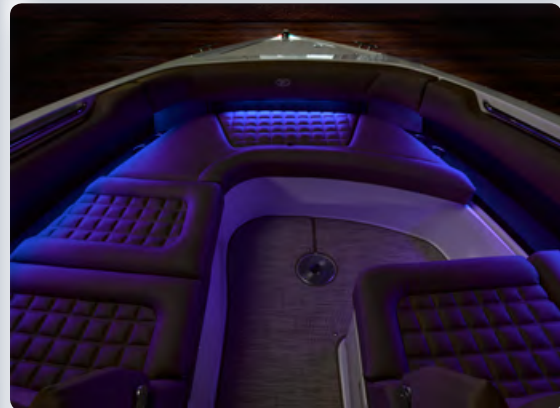


R30





R30





COBALT R30



SPECIFICATIONS

Length Overall w/Swim Platform	30' 8"	9.35 m
Beam	9' 6"	2.90 m
Interior Cockpit Width	8' 5"	2.57 m
Deadrise at Transom	21°	21°
Fuel Capacity	116 gal	439 L
Freshwater Capacity	18 gal	68 L
Holding Tank Capacity	9 gal	34 L
Bridge Clearance (windshield only)	5' 0"	1.52 m
Draft Drive Up, Single Eng	25"	.63 m
Draft Drive Down, Single Eng.	37"	.94 m
Draft Drive Up, Twin Eng.	27"	.68 m
Draft Drive Down, Twin Eng.	39"	.99 m
Dry Weight, w/Single Engine	7,400 lb.	3354 kg
Dry Weight, w/Twin Engines	8,800 lbs.	3992 kg
Boat Certified Capacity	Yacht Certified	
Boat Certified Capacity w/gear	Yacht Certified	

VOLVO PENTA STERNDRIVE POWER

V8-380CE DP EVC	380 hp	283 PkW
V8-430CE DP EVC	430 hp	321 PkW
Twin V8-300CE-G DP EVC	300 hp	221 PkW
Twin V8-350CE-G DP EVC	350 hp	261 PkW
Twin V8-380CE DP EVC	380 hp	283 PkW
Twin V8-430CE DP EVC	430 hp	321 PkW

MERCURISER STERNDRIVE POWER

8.2 Mag ECT B3X DTS	380 hp	283 PkW
8.2 Mag HO ECT B3X DTS	430 hp	321 PkW
Twin 6.2 L MPI ECT-300 B3 DTS	300 hp	221 PkW
Twin 6.2 L MPI ECT-350 B3 DTS	350 hp	261 PkW
Twin 8.2 Mag ECT B3X DTS	380 hp	283 PkW
Twin 8.2 Mag HO ECT B3X DTS	430 hp	321 PkW

COBALT R30



STANDARD EQUIPMENT

Dash and Instrumentation

Accessory Power Plug - 12 Volt
Color-Matched Helm Switch Panels
Compass (digital)
Composite Helm Eyebrow,
Custom Stitching
Dash Perimeter Black Accent Trim
Depth & Water/Air Temp Gauge Pkg.
Glass Cockpit, Dual Garmin 7607
Gloss Black Dash Console
Hour Meter
Premium Black Leather/
SS Steering Wheel
Stainless Steel Switches

Engine Options

DTS (Merc)
EVC w/PTA & Cruise (Volvo)
Trip Computer (Volvo EVC)

Exterior

Aluminum Windshield,
Black w/SS Header
Anchor Locker
Bow Scuff Plate, Stainless Steel
Extended Running Surface
Fender Clips w/Line (6)
Graphics, Molded-In Gelcoat
Midship Cleats
Motorbox Actuator
Ski Pylon - Stainless Steel
Sky Light (Head Compartment)
Stainless Steel Engine Vents
Swim Platform, Hydraulic w/Ladder

Interior

Aft Walk-Thru Carpet
Air Compressor w/Holder
Bench Seat Storage, Bow & Cockpit
Bow Walk-Thru Doors
Carpet, 40 oz., Snap-In w/Neoprene Back
Cooler, Icon (removable)
Dual Sundeck Convertible Lounger
Filler Cushion, Cockpit Seat
Head w/Pump Out Porta Potti
Helm Seat, Double Wide w/Flip-Lip
Passenger's Seat Flip Backrest System
Removable Bow & Cockpit Carpet
Seating Varadense Comfort
Sink Console (head compartment)
Ski Storage w/Fiberglass Liner
Trash Receptacle

Stereo

Custom Acoustic Speaker Covers
iPod/USB/MP3 Port

Sound System w 6 Spkrs. (na w/hardtop)
Stereo Remote, Dash
Stereo Remote, Transom (Prem. Sound)

Structure, Safety, & Performance

10/5/3 Year Warranty Protection
Battery Switch, Dual w/ACR
Circuit Breaker Protected Elec System
Composite Floor
Composite Seat Bases
Composite Transom
Fiberglass Cockpit Liner
Fiberglass Stringer System
Fire Extinguisher, Manual
Ignition Safety Switch
Kevlar Reinforced Hull
Stainless Steel Windshield Braces
Through Prop Exhaust

OPTIONAL EQUIPMENT

Canvas

Bimini, Premium Easy-Fold
Bow Tonneau Cover
Cockpit Tonneau Cover
Mooring Cover

Dash and Instrumentation

Makassar Dash/Interior Trim Pkg.
Rudder Indicator, Vol (na w/Joystick)
XM Weather

Engine Options

Active Trim, Merc-single
Active Trim, Merc-twin
Anti-Corrosion System (Twin Vol 300hp)
Axis Premier (DTS)-Merc twin
Joystick Sterndrive (EVC)-Volvo Twin
Ocean-X (Volvo)-Single Engine
Ocean-X (Volvo)-Twin Engines
Seacore (Merc)-Single Engine
Seacore (Merc)-Twin Engines
Tow Mode (Volvo-Single EVC)

Exterior

Arch, SS/Alum w/Hard Top
& Retract Shade
Arch, SS/Alum w/Sunshade
Arch, SS/Alum w/Hard Top
& Elec Sureshade
COBALT Oval Logo, Recessed
Color Accented Headliner for Hard Top
Docking Lights-Stainless Steel
Flagpole w/Flag
Portal Light (1 in Head Compartment)
Sof-Trac Mat (std. swim platform)
Swim Platform Transom Lighting
Transhield Shipping Cover

Transom Shower
Transom Tilt Switch, single engine
Transom Tilt Switches, twin engines
Underwater Lighting
Wakeboard Racks, Elite (Alum)
Wakeboard Racks, Triton

Interior

Bow Center Cushion Insert
Cockpit Heater
Dinette Table w/Bow &
Cockpit Receptacle
Floor Covering, Sea Grass
Galley, Cockpit (replaces seat)
Grey Water System
Head w/Pump Out Porta-Potti, Macerator
Head w/VacuFlush
Head w/VacuFlush, Macerator
LED Interior Accent Lighting (RGB)
Quilted Pattern Upholstery Accents
Refrigerator
Remote Courtesy Lights w/key fob
Sof-Trac Marine Mat, Cockpit
Stainless Steel Foot Tread (helm only)
Throw Pillows, Weighted (10)
Throw Pillows, Weighted (4)

Stereo

Plat Sound w/Transom & Arch Spkrs-2 pr.
Plat Sound w/Transom Spkrs.
Prem Sound w/Transom
& Arch Spkrs-1 pr.
Prem Sound w/Transom Spkrs.
Satellite Radio System
Stereo Remote, Transom (Std. Sound)

Structure, Safety, & Performance

Battery Maintainer/Charger, 110v
Battery Maintainer/Charger, 220v
Captain's Call Exhaust-Single Engine
Captain's Call Exhaust-Twin Engines
Captain's Call Plus (w/
Mufflers)-Single Engine
Captain's Call Plus (w/
Mufflers)-Twin Engines
CE Requirements w/Auto Fire Extinguisher
Cruise Control-Smart Tow (Merc DTS sgl)
Cruise Control-Zero Off (Vol EVC sgl)
Drivers Rearview Mirror (W/S Mount)
Fire Extinguisher, Automatic System
Tool Kit
Trim Tabs w/Indicators w/Autoglide(twin)
Trim Tabs w/Indicators, w/o Autoglide
Windlass, All Chain w/Anchor



R35

COBALT BOATS

R SERIES

COBALT *R35*

Value is defined as the ratio of utility to price. Or are you searching for something more?

The Cobalt R35 is the newest addition to our award-winning line of bowriders. She's a hybrid open-bow day boat designed with the leathery luxury of a well-appointed mid-cabin. At first look, the panoramic side windows in the hull bring the outside in, and reflect the envious stares of dockside passersby-ers. Even the windshield invites further investigation of its stainless-steel strength, its wraparound handsomeness.

The cabin is snug and expansive, with a sofa stretching out there nine full feet and swiftly changeable to a berth capable of sleeping two adults and a three-year-old interloper. The cabin makes full and fine use of its spaciousness, by turns air-conditioned or heated as the day's outing or the week's cruise might require. Inside, a cabinet designed to very specific purposes of entertainment come a 32" LCD HD television, a DVD player, and a play-station hookup. The portside head compartment looms enormous, ready to double as a shower seat.

The largest of the R Series, the R35 also features a hydraulically actuated swim platform that lowers to below the water's surface, plus the added depth of the exclusive swim step. Also astern, find a beach of a sun-pad – large enough for four sun worshipers. And when it comes time to gather around for some good fun and conversation, make useful our convertible layout in the cockpit.

At the helm, the captain will find that the glass cockpit design provides a birds-eye-view for a safe and enjoyable day on the water – equipped with Garmin screens that keep your systems in view at all times. We cannot forget about the available joystick control with its easy maneuverability and simple operation. That's right – easy and simple – all with a touch of class and style. The Cobalt R35.



R35







R35





COBALT R35



SPECIFICATIONS

Length Overall w/ Swim Platform	34' 9"	10.59 m
Beam	10' 7"	3.23 m
Interior Cockpit Width	9' 0"	2.74 m
Deadrise at Transom	22°	22°
Fuel Capacity	154 gal.	582 L
Freshwater Capacity	27 gal	102 L
Holding Tank Capacity	28 gal.	106 L
Bridge Clearance w/Arch	8' 10"	2.69 m
Draft Drive Up	24"	.61 m
Draft Drive Down	35"	.90 m
Dry Weight	12300 lbs.	5579 kg
Boat Certified Capacity	Yacht Certified	
Boat Certified Capacity w/gear	Yacht Certified	

VOLVO PENTA STERNDRIVE POWER

Twin V8-300CE-G DP	300 hp	221 PkW
Twin V8-350CE-G DP	350 hp	261 PkW
Twin V8-380CE DP	380 hp	283 PkW
Twin V8-430CE DP	430 hp	321 PkW

MERCUISER STERNDRIVE POWER

Twin 6.2 L MPI ECT-300 B3 DTS	300 hp	221 PkW
Twin 6.2 L MPI ECT-350 B3 DTS	350 hp	261 PkW
Twin 8.2 Mag ECT B3X DTS	380 hp	283 PkW
Twin 8.2 Mag HO ECT B3X DTS	430 hp	321 PkW

COBALT R35



STANDARD EQUIPMENT

Dash and Instrumentation

Accessory Power Plug - 12 Volt
Compass, Digital
Composite Helm Eyebrow,
Custom Stitching
Depth & Water/Air Temp Gauge Pkg.
Glass Cockpit, Dual Garmin 7612
Gloss Black Dash Console
Hour Meters
Premium Black Leather/
SS Steering Wheel
Stainless Steel Switches

Engine Options

Active Trim (Merc)
DTS (Merc)
EVC w/PTA & Cruise (Volvo)
Trip Computer (Volvo EVC)

Exterior

Anchor Locker
Arch, SS w/Hard Top & Elec Sureshade
Bow Scuff Plate, Stainless Steel
Extended Running Surface
Fender Clips w/Line (6)
Hideaway Cockpit Dinette Table
Midship Cleats
Motorbox Actuator
Panoramic Hull Windows
Ski Tow Eye - Stainless Steel
Sky Lights (1-Head, 1-Cabin)
SS Tubular Platform Perimeter Rail
Stainless Steel Engine Vents
Stainless Top Trim Windshield
Swim Platform, Hydraulic w/Flip-Step
Transom Storage Locker
Transom Storage/Ice Chest

Interior

Aft Sunpad w/Adjustable Backrest
Aft Sunpad w/Walk-Thru Transom
Aft Walk-Thru Carpet
Air Compressor w/Holder
Benchseat Storage
Bow Walk-Thru Door
Cabin Door w/Sliding Screen & Window
Carpet, 40 oz., Snap-In w/Neoprene Back
Dinette Table w/Bow,CP & Cabin Recept.
Double Wide Helm Seat
Galley, Cockpit w/Sink
Head Compartment w/Shower
Head w/VacuFlush

L Lounge Cockpit Seating
Passenger Seat Flip Backrest System
Removable Cockpit Carpet
Seating Varadense Comfort
Seating, Helm Flip-Up
Shore Power Kit-110 Volt w/
battery charger
Sink Console (head compartment)
Throw Pillows, cabin

Stereo

Custom Acoustic Speaker Covers
iPod/USB/MP3 Port
Premium Sound w/Transom Spkrs.
Stereo Remote, Dash
Stereo Remote, Transom

Structure, Safety, & Performance

10/5/3 Year Warranty Protection
Battery Switch, Dual w/ACR
Circuit Breaker Protected Elec System
Composite Floor
Composite Transom
Fiberglass Cockpit Liner
Fiberglass Stringer System
Fire Extinguisher, Manual
Hot Water Heater w/Exchanger (110 Volt)
Ignition Safety Switch
Kevlar Reinforced Hull
Stainless Steel Windshield Braces
Through Prop Exhaust
Trim Tabs w/Indicators, w/o Autoglide

OPTIONAL EQUIPMENT

Canvas

Bow Tonneau Cover
Cockpit Tonneau Cover
Mooring Cover

Dash and Instrumentation

VHF Radio Unit

Engine Options

Anti-Corrosion System (Twin Vol 300hp)
Axis Premier (DTS)-Merc
Joystick Sterndrive (EVC)-Volvo
Ocean-X (Volvo)
Seacore (Merc)

Exterior

COBALT Oval Logo, Recessed
Color Accented Headliner for Hard Top
Docking Lights-Stainless Steel
Flagpole w/Flag
Sof-Trac Mat (swim platform)

Swim Platform Transom Lighting
Teak Accent Package
Transhield Shipping Cover
Transom Shower
Transom Tilt Switches
Underwater Lighting

Interior

Aft Walk-Thru Gate
Air Conditioning/Heating
Bow Center Cushion Insert
Cabin Custom Wood Floor
Captain's Chair, Power
Cockpit Heater
Floor Covering, Sea Grass
Grey Water System
Head w/VacuFlush, Macerator
LED Interior Accent Lighting (RGB)
Refrigerator
Refrigerator/Microwave Pkg., cockpit
Remote Courtesy Lights w/key fob
Shore Power Kit-220 Volt w/
battery charger
Sof-Trac Marine Mat, Cockpit
Stainless Steel Foot Tread (helm only)
Throw Pillows, Weighted (10)
Throw Pillows, Weighted (4)

Stereo

Cabin Entertainment Package (TV/DVD)
Cabin Entertainment Pkg., CE (no TV)
Cable TV Connection
Platinum Sound w/Transom Spkrs.
Satellite Radio System
TV Antenna

Structure, Safety, & Performance

Captain's Call Exhaust
Captain's Call Plus (w/Mufflers)
CE Req. w/Auto Fire Ext. & Generator
CE Requirements w/Auto Fire Extinguisher
Fire Extinguisher, Automatic System
Fire Extinguisher, Automatic
System (generator)
Generator (5kw-110v) w/Sound Shield
Generator (5kw-220v) w/Sound Shield
Inverter, 1800w (1 outlet)
Tool Kit
Trim Tabs w/Indicators, w/Autoglide
Windlass, All Chain w/Anchor



CS23 SURF

COBALT BOATS

SURF
SERIES

CS23 SURF

Cobalt surfing perfection.

Until now, wake surfing boats have compromised ride, comfort, top speed performance, and low speed maneuverability. That was before the WSS SURF from Cobalt. Combining Cobalt's award-winning smooth ride and the performance advantages of a stern drive, coupled with the enormous wake making capabilities of a surf boat - this was the perfect challenge! Now perfectly executed. And without compromise.

The WSS Surf combines a proven deep v hull design with innovative design to exceed the riders' demands. We developed a world class "wake maker" thanks to our patent pending SURF control system - which quickly and automatically tunes the boat's attitude and speed to the optimal SURF configuration - on either side of the boat. A fully customizable wake that provides smooth transitions, a wide push zone, and a solid pop. Keep the boat evenly weighted and switch the wave from each side in seconds without the need to re-distribute ballast and people.

VOLVO PENTA FORWARD DRIVE

Volvo Penta does it again with the all-new Forward Drive propulsion system. Uniquely engineered with two forward-facing counter-rotating props that pull the boat through the water rather than pushing it, Forward Drive gives small-craft leisure boaters new found versatility. Whether wakesurfing, wakeboarding or simply cruising, Forward Drive allows boaters to enjoy endless days of fun without sacrifice. Armed with power trim and an enlarged trim plate, drivers can easily customize their wake for watersports, then level off for smooth cruising.



SURF



Surfing Made Simple

With the touch of a button Cobalt's automated computer control surf system adjusts the Bi-Axis Surf Tabs to create the optimum surf wake either left or right. No need to transfer ballast load between tanks to achieve optimum surf wake.

- Fill ballast tanks
- Set GPS directed cruise control to desired speed
- Select surf control left or right
- Throttle up and surf

On Plane with Full Ballast

In Performance Mode the surf tabs automatically deploy and adjust for a quick hole-shot through to running speed, easily getting the boat on plane with full ballast. No need to empty tanks for a quick run at speed.

Performance of Total Trim Control

Exceptional wake surfing doesn't come at a compromise to Cobalt's softer, drier, faster ride. With the versatility of full-range power trim all the control and efficient operation remains. Drivers can easily customize the wake for surfing, wakeboarding or smooth cruising. Plus, Volvo's Forward Drive is uniquely engineered with two forward-facing counter-rotating props, which position the propellers to the front of the drive unit, well under the boat.

The Cobalt WSS SURF

The best aspects of boating by providing a world-class ride combined with a superior surf wake.

Compromise Nothing!

VOLVO PENTA FORWARD DRIVE



CS23 SURF



CS23 SURF



CS23 SURF



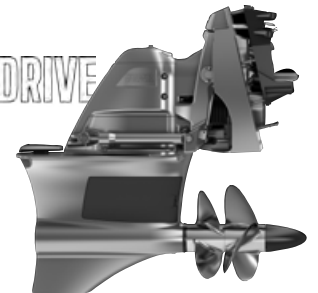
SPECIFICATIONS

Length Overall w/ Swim Platform	23' 8"	7.21 m
Beam	8' 6"	2.59 m
Interior Cockpit Width	92"	2.34 m
Deadrise at Transom	20°	20°
Fuel Capacity	52 gal.	197 L
Bridge Clearance w/o Bimini	3' 11"	1.19 m
Bridge Clearance w/Arch	6' 10"	2.08 m
Draft Drive Up	24"	.61m
Draft Drive Down	37"	.94m
Dry Weight	3700 lbs.	1678 kg
Boat Certified Capacity	12 persons	
Boat Certified Capacity w/gear	1695 lbs.	768 kg

VOLVO PENTA STERNDRIVE POWER

V8-300CE-G EVC DP (FWD)	300 hp	224 PkW
V8-350CE-G EVC DP (FWD)	350 hp	261 PkW

**VOLVO
PENTA**
FORWARD DRIVE





STANDARD EQUIPMENT

Dash and Instrumentation

- Accessory Power Plug - 12 Volt
- Compass
- Composite Helm Eyebrow,
- Custom Stitching
- Depth & Water/Air Temp Gauge Pkg.
- Etched Stainless Steel Instrument Panel
- Hour Meter
- Leather Steering Wheel w/
- Auto Leveling Hub
- Stainless Steel Switches

Engine Options

- EVC w/PTA & Cruise (Volvo)
- Volvo Forward Drive (FWD)

Exterior

- Anchor Locker
- Arch, Alum, Folding w/Bimini
- Bow Scuff Plate, Stainless Steel
- COBALT Oval Logo, Recessed
- Extended Running Surface
- Flip-Down Swim Step w/o Ladder
- Graphics, Molded-In Gelcoat
- Midship Cleats
- Ski Tow Eye, Stainless Steel
- Sof-Trac Mat, Swim Platform
- SS Tubular Platform Perimeter Rail
- Stainless Top Trim Windshield
- Wakeboard Racks, Elite (Alum)

Interior

- Aft Sunpad w/Walk-Thru Transom
- Bow Walk-Thru Door
- Carpet, 40 oz., Snap-In w/Neoprene Back
- Removable Bow & Cockpit Carpet
- Removable Ice Chest
- Seating Varadense Comfort
- Seating, Helm Flip-Up

Stereo

- iPod/USB/MP3 Port
- Sound System, Bluetooth, w/6 Spkr.
- Stereo Remote, Transom (Prem. Sound)

Structure, Safety, & Performance

- 10/5/3 Year Warranty Protection
- Circuit Breaker Protected Elec System
- Composite Floor
- Composite Seat Bases
- Composite Transom
- Cruise Control-Zero Off (Vol)
- Fiberglass Cockpit Liner
- Fiberglass Stringer System
- Fire Extinguisher, Manual
- Ignition Safety Switch
- Kevlar Reinforced Hull
- Stainless Steel Windshield Braces
- Through Prop Exhaust

OPTIONAL EQUIPMENT

Canvas

- Bow Tonneau Cover
- Cockpit Tonneau Cover
- Mooring Cover

Cockpit Configuration

- Dual Aft Walk-Thru
- L Lounge

Dash and Instrumentation

- GPS, Garmin 7607, Touch Screen
- Rudder Indicator, Volvo
- XM Weather

Engine Options

- Anti-Corrosion System (Vol 300hp)

Exterior

- Arch, Alum, Folding w/Bimini
- COBALT Oval Logo, Recessed
- Docking Lights-Stainless Steel
- Fender Clips w/Line (4)
- Flagpole w/Flag
- Surf Tow Ball (2)-Folding Arch only
- Swim Platform Transom Lighting
- Transhield Shipping Cover
- Transom Tilt Switch
- Underwater Lighting
- Wakeboard Racks, Triton

Interior

- Aft Filler Cushion, Port
- Aft Filler Cushion, Stbd.
- Aft Filler Cushions, Port & Stbd.
- Air Compressor w/Holder
- Bow Center Cushion Insert
- Dinette Table w/cockpit receptacle
- Floor Covering, Sea Grass
- LED Interior Accent Lighting (RGB)
- Remote Courtesy Lights w/key fob
- Sof-Trac Marine Mat, Cockpit
- Stainless Steel Foot Tread (helm only)
- Throw Pillows, Weighted (10)
- Throw Pillows, Weighted (4)

Stereo

- Prem Sound System w/Arch Spkrs-1 pr.
- Premium Sound System
- Satellite Radio System
- Stereo Remote, Transom (Std. Sound)

Structure, Safety, & Performance

- Battery Maintainer/Charger, 110v
- Battery Maintainer/Charger, 220v
- Battery Switch, Dual w/ACR
- CE Requirements w/Auto
- Fire Extinguisher
- Drivers Rearview Mirror (W/S Mount)
- Fire Extinguisher, Automatic System
- Tool Kit



R3 SURF

COBALT BOATS

SURF
SERIES

R₃SURF

Cobalt surfing perfection.

Until now, wake surfing boats have compromised ride, comfort, top speed performance, and low speed maneuverability. That was before the WSS SURF from Cobalt. Combining Cobalt's award-winning smooth ride and the performance advantages of a stern drive, coupled with the enormous wake making capabilities of a surf boat - this was the perfect challenge! Now perfectly executed. And without compromise.

The WSS Surf combines a proven deep v hull design with innovative design to exceed the riders' demands. We developed a world class "wake maker" thanks to our patent pending SURF control system - which quickly and automatically tunes the boat's attitude and speed to the optimal SURF configuration - on either side of the boat. A fully customizable wake that provides smooth transitions, a wide push zone, and a solid pop. Keep the boat evenly weighted and switch the wave from each side in seconds without the need to re-distribute ballast and people.

VOLVO PENTA FORWARD▶▶DRIVE

Volvo Penta does it again with the all-new Forward Drive propulsion system. Uniquely engineered with two forward-facing counter-rotating props that pull the boat through the water rather than pushing it, Forward Drive gives small-craft leisure boaters new found versatility. Whether wakesurfing, wakeboarding or simply cruising, Forward Drive allows boaters to enjoy endless days of fun without sacrifice. Armed with power trim and an enlarged trim plate, drivers can easily customize their wake for watersports, then level off for smooth cruising.



SURF



SURF



Surfing Made Simple

With the touch of a button Cobalt's automated computer control surf system adjusts the Bi-Axis Surf Tabs to create the optimum surf wake either left or right. No need to transfer ballast load between tanks to achieve optimum surf wake.

- Fill ballast tanks
- Set GPS directed cruise control to desired speed
- Select surf control left or right
- Throttle up and surf

On Plane with Full Ballast

In Performance Mode the surf tabs automatically deploy and adjust for a quick hole-shot through to running speed, easily getting the boat on plane with full ballast. No need to empty tanks for a quick run at speed.

Performance of Total Trim Control

Exceptional wake surfing doesn't come at a compromise to Cobalt's softer, drier, faster ride. With the versatility of full-range power trim all the control and efficient operation remains. Drivers can easily customize the wake for surfing, wakeboarding or smooth cruising. Plus, Volvo's Forward Drive is uniquely engineered with two forward-facing counter-rotating props, which position the propellers to the front of the drive unit, well under the boat.

The Cobalt WSS SURF

The best aspects of boating by providing a world-class ride combined with a superior surf wake.

Compromise Nothing!

VOLVO PENTA FORWARD DRIVE



R3 SURF



R3 SURF



R3 SURF



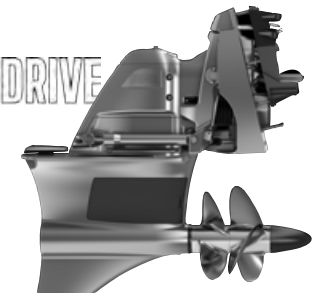
SPECIFICATIONS

Length Overall w/Swim Platform	23' 10"	7.26m
Beam	8' 6"	2.59 m
Interior Cockpit Width	95"	2.41 m
Deadrise at Transom	21°s	21°
Fuel Capacity	47 gal.	178 L
Freshwater Capacity	10 gal.	38 L
Bridge Clearance w/o Bimini	62"	1.57 m
Bridge Clearance w/Bimini	89"	2.26 m
Bridge Clearance w/Arch or Tower	96"	2.44 m
Draft Drive Up	34"	.86 m
Draft Drive Down	37"	.94 m
Dry Weight	4450 lbs.	2018 kg
Ballast Capacity Total (5 tanks)	1566 lbs.	710 Kg
Boat Certified Capacity	12 persons	
Boat Certified Capacity w/gear	1800 lbs.	816 kg

VOLVO PENTA STERNDRIVE POWER

V8-300CE-G EVC DP (FWD)	300 hp	221 PkW
V8-350CE-G EVC DP (FWD)	350 hp	261 PkW
V8-380CE EVC DP (FWD)	380 hp	283 PkW
V8-430CE EVC DP (FWD)	430 hp	321 PkW

**VOLVO
PENTA**
FORWARD DRIVE





STANDARD EQUIPMENT

Dash and Instrumentation

Accessory Power Plug - 12 Volt
 Black Leather/SS Steering Wheel
 Color-Matched Aluminum Dash Panels
 Composite Helm Eyebrow,
 Custom Stitching
 Dash Perimeter SS Accent Trim
 Depth & Water Temp Pkg.
 Easy-Surf Electronic Control System
 Glass Cockpit, Garmin 7607
 Gloss Black Dash Console w/SS Accents
 Hour Meter
 Illuminated Switch Panel/Switches
 Stainless Steel Switches

Engine Options

EVC w/PTA & Cruise (Volvo)
 Volvo Forward Drive (FWD)

Exterior

Anchor Locker
 Arch, SS/Alum w/Sunshade
 Bow Scuff Plate, Stainless Steel
 Extended Running Surface
 Fender Clips w/Line (4)
 Graphics, Molded-In Gelcoat
 Midship Cleats
 Ski Pylon (arch mounted)
 Sof-Trac Mat, Flip Down Swim Step
 SS Tubular Platform Perimeter Rail
 Stainless Steel Engine Vents
 Stainless Top Trim Windshield
 Swim Platform w/Flip-Down Swim Step
 Wakeboard Racks, Elite (Alum)

Interior

Aft Facing Rumble Seat
 Aft Sunpad Backrest SS Accent Rail
 Aft Walk-Thru Carpet
 Bow Armrests
 Bow Walk-Thru Doors
 Carpet, 40 oz., Snap-In w/Neoprene Back
 Del Mar Helm Capt. Chair
 Passenger Seat Flip Backrest System
 Removable Bow & Cockpit Carpet
 Seating Varadense Comfort
 Sundeck Convertible Lounger
 Trash Receptacle, Cockpit

Stereo

Custom Acoustic Speaker Covers
 iPod/USB/MP3 Port
 Sound System, Bluetooth, w/6 Spkrs.
 Stereo Remote, Dash
 Stereo Remote, Transom (Prem. Sound)

Structure, Safety, & Performance

10/5/3 Year Warranty Protection
 Battery Switch, Single
 Circuit Breaker Protected Elec System
 Composite Floor
 Composite Transom
 Cruise Control-Zero Off
 Fiberglass Cockpit Liner
 Fiberglass Stringer System
 Fire Extinguisher, Manual
 Ignition Safety Switch
 Kevlar Reinforced Hull
 Rigid Multi-Tank Ballast System
 Single-Axis Performance Surf Tab System
 Stainless Steel Windshield Braces
 Through Prop Exhaust

OPTIONAL EQUIPMENT

Canvas

Bow Tonneau Cover
 Cockpit Tonneau Cover
 Mooring Cover

Dash and Instrumentation

Makassar Dash/Interior Trim Pkg.
 Rudder Indicator, Volvo
 XM Weather

Engine Options

Anti-Corrosion System (Vol 300hp)

Exterior

Arch, Alum, Folding w/Bimini
 Arch, Elec Folding w/Rotating Sunshade
 Arch, Electric Alum Folding w/Bimini
 Arch, Folding w/Rotating Sunshade
 Arch, SS/Alum w/Sunshade (std)
 Docking Lights-Stainless Steel
 Motorbox Actuator
 Sof-Trac Mat, Flip Down Swim Step
 Surf Tow Ball (2)-Folding Arch only
 Swim Platform Transom Lighting
 Transhield Shipping Cover

Transom Shower
 Transom Tilt Switch
 Umbrella w/Receiver (ski pylon mounted)
 Underwater Lighting
 Wakeboard Racks, Triton

Interior

Air Compressor w/Holder
 Bow Center Cushion Insert
 Captain's Chair, Power
 Dinette Table w/CP & Sunpad Receptacle
 Floor Covering, Sea Grass
 LED Interior Accent Lighting (RGB)
 Quilted Pattern Upholstery Accents
 Remote Courtesy Lights w/key fob
 Sof-Trac Marine Mat, Cockpit
 Stainless Steel Foot Tread (helm only)
 Sunpad Filler Cushion (w/Dinette)
 Sunpad Filler Cushion (w/o Dinette)
 Throw Pillows, Weighted (10)
 Throw Pillows, Weighted (4)

Stereo

Plat Sound w/Transom & Arch Spkrs-2 pr.
 Plat Sound w/Transom Spkrs.
 Prem Sound w/Transom
 & Arch Spkrs-1 pr.
 Prem Sound w/Transom Spkrs.
 Satellite Radio System
 Stereo Remote, Transom (Std. Sound)

Structure, Safety, & Performance

Battery Maintainer/Charger, 110v
 Battery Maintainer/Charger, 220v
 Battery Switch, Dual w/ACR (required)
 CE Requirements w/Automatic
 Fire Extinguisher
 Drivers Rearview Mirror (W/S Mount)
 Fire Extinguisher, Automatic System
 Tool Kit
 Windlass, All Chain w/Anchor



R5 SURF

COBALT BOATS

SURF
SERIES

R5 SURF

Cobalt surfing perfection.

Until now, wake surfing boats have compromised ride, comfort, top speed performance, and low speed maneuverability. That was before the WSS SURF from Cobalt. Combining Cobalt's award-winning smooth ride and the performance advantages of a stern drive, coupled with the enormous wake making capabilities of a surf boat - this was the perfect challenge! Now perfectly executed. And without compromise.

The WSS Surf combines a proven deep v hull design with innovative design to exceed the riders' demands. We developed a world class "wake maker" thanks to our patent pending SURF control system - which quickly and automatically tunes the boat's attitude and speed to the optimal SURF configuration - on either side of the boat. A fully customizable wake that provides smooth transitions, a wide push zone, and a solid pop. Keep the boat evenly weighted and switch the wave from each side in seconds without the need to re-distribute ballast and people.

VOLVO PENTA FORWARD DRIVE

Volvo Penta does it again with the all-new Forward Drive propulsion system. Uniquely engineered with two forward-facing counter-rotating props that pull the boat through the water rather than pushing it, Forward Drive gives small-craft leisure boaters new found versatility. Whether wakesurfing, wakeboarding or simply cruising, Forward Drive allows boaters to enjoy endless days of fun without sacrifice. Armed with power trim and an enlarged trim plate, drivers can easily customize their wake for watersports, then level off for smooth cruising.



SURF



Surfing Made Simple

With the touch of a button Cobalt's automated computer control surf system adjusts the Bi-Axis Surf Tabs to create the optimum surf wake either left or right. No need to transfer ballast load between tanks to achieve optimum surf wake.

- Fill ballast tanks
- Set GPS directed cruise control to desired speed
- Select surf control left or right
- Throttle up and surf

On Plane with Full Ballast

In Performance Mode the surf tabs automatically deploy and adjust for a quick hole-shot through to running speed, easily getting the boat on plane with full ballast. No need to empty tanks for a quick run at speed.

Performance of Total Trim Control

Exceptional wake surfing doesn't come at a compromise to Cobalt's softer, drier, faster ride. With the versatility of full-range power trim all the control and efficient operation remains. Drivers can easily customize the wake for surfing, wakeboarding or smooth cruising. Plus, Volvo's Forward Drive is uniquely engineered with two forward-facing counter-rotating props, which position the propellers to the front of the drive unit, well under the boat.

The Cobalt WSS SURF

The best aspects of boating by providing a world-class ride combined with a superior surf wake.

Compromise Nothing!

VOLVO PENTA FORWARD DRIVE



R5 SURF



R5 SURF



R5 SURF



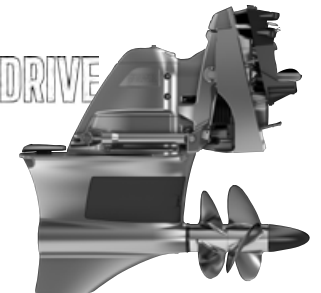
SPECIFICATIONS

Length Overall w/Swim Platform	25' 8"	7.82 m
Beam	8' 6"	2.59 m
Interior Cockpit Width	95"	2.41 m
Deadrise at Transom	21°	21°
Fuel Capacity	48 gal.	182 L
Freshwater Capacity	10 gal.	38 L
Bridge Clearance w/o Bimini	64"	1.63 m
Bridge Clearance w/Bimini	91"	2.31 m
Bridge Clearance w/Arch or Tower	98"	2.49 m
Draft Drive Up	34"	.86 m
Draft Drive Down	37"	.94 m
Dry Weight	4880 lbs.	2214 kg
Ballast Capacity Total (5 tanks)	2115 lbs.	959 Kg
Boat Certified Capacity	14 persons	
Boat Certified Capacity w/gear	2250 lbs.	1021 kg

VOLVO PENTA STERNDRIVE POWER

V8-300CE-G EVC DP (FWD)	300 hp	221 PkW
V8-350CE-G EVC DP (FWD)	350 hp	261 PkW
V8-380CE EVC DP (FWD)	380 hp	283 PkW
V8-430CE EVC DP (FWD)	430 hp	321 PkW

**VOLVO
PENTA**
FORWARD DRIVE





STANDARD EQUIPMENT

Dash and Instrumentation

Accessory Power Plug - 12 Volt
 Black Leather/SS Steering Wheel
 Color-Matched Aluminum Dash Panels
 Composite Helm Eyebrow,
 Custom Stitching
 Dash Perimeter SS Accent
 Depth & Water Temp Pkg.
 Easy-Surf Electronic Control System
 Glass Cockpit, Garmin 7607
 Gloss Black Dash Console w/SS Accents
 Hour Meter
 Illuminated Switch Panel/Switches
 Stainless Steel Switches

Engine Options

EVC w/PTA & Cruise (Volvo)
 Volvo Forward Drive (FWD)

Exterior

Anchor Locker
 Arch, SS/Alum w/Sunshade
 Bow Scuff Plate, Stainless Steel
 Extended Running Surface
 Fender Clips w/Line (4)
 Graphics, Molded-In Gelcoat
 Midship Cleats
 Ski Pylon (arch mounted)
 Sky Light (Head Compartment)
 Sof-Trac Mat, Flip Down Swim Step
 SS Tubular Platform Perimeter Rail
 Stainless Steel Engine Vents
 Stainless Top Trim Windshield
 Swim Platform w/Flip-Down Swim Step
 Wakeboard Racks, Elite (Alum)

Interior

Aft Facing Rumble Seat
 Aft Sunpad Backrest SS Accent Rail
 Aft Walk-Thru Carpet
 Bow Cushion Insert, Stbd.
 Bow Walk-Thru Doors
 Carpet, 40 oz., Snap-In w/Neoprene Back
 Del Mar Helm Capt. Chair
 Head w/Porta Potti
 Passenger Seat Flip Backrest System
 Removable Bow & Cockpit Carpet

Seating Varadense Comfort
 Sundeck Convertible Lounger
 Trash Receptacle, Cockpit

Stereo

Custom Acoustic Speaker Covers
 iPod/USB/MP3 Port
 Sound System, Bluetooth, w/6 Spkrs.
 Stereo Remote, Dash
 Stereo Remote, Transom (Prem. Sound)

Structure, Safety, & Performance

10/5/3 Year Warranty Protection
 Battery Switch, Single
 Circuit Breaker Protected Elec System
 Composite Floor
 Composite Transom
 Cruise Control-Zero Off
 Fiberglass Cockpit Liner
 Fiberglass Stringer System
 Fire Extinguisher, Manual
 Ignition Safety Switch
 Kevlar Reinforced Hull
 Rigid Multi-Tank Ballast System
 Single-Axis Performance Surf Tab System
 Stainless Steel Windshield Braces
 Through Prop Exhaust

OPTIONAL EQUIPMENT

Canvas

Bow Tonneau Cover
 Cockpit Tonneau Cover
 Mooring Cover

Dash and Instrumentation

Makassar Dash/Interior Trim Pkg.
 Rudder Indicator, Volvo
 XM Weather

Engine Options

Anti-Corrosion System (Vol 200-300hp)

Exterior

Arch Elec, Alum Folding w/Bimini
 Arch, Alum, Folding w/Bimini
 Arch, Elec Folding w/Rotating Sunshade
 Arch, Folding w/Rotating Sunshade
 Arch, SS/Alum w/Sunshade (std)
 Docking Lights-Stainless Steel
 Motorbox Actuator

Portal Light (1 in Head Compartment)
 Sof-Trac Mat, Flip Down Swim Step
 Surf Tow Ball (2)-Folding Arch only
 Swim Platform Transom Lighting
 Transhield Shipping Cover
 Transom Shower
 Transom Tilt Switch
 Umbrella w/Receiver (ski pylon mounted)
 Underwater Lighting
 Wakeboard Racks, Triton

Interior

Air Compressor w/Holder
 Bow Center Cushion Insert
 Captain's Chair, Power
 Dinette Table w/CP & Sunpad Receptacle
 Floor Covering, Sea Grass
 Head w/Pump Out Porta-Potti
 LED Interior Accent Lighting (RGB)
 Quilted Pattern Upholstery Accents
 Remote Courtesy Lights w/key fob
 Sink Console (head compartment)
 Sof-Trac Marine Mat, Cockpit
 Stainless Steel Foot Tread (helm only)
 Sunpad Filler Cushion (w/Dinette)
 Sunpad Filler Cushion (w/o Dinette)
 Throw Pillows, Weighted (10)
 Throw Pillows, Weighted (4)

Stereo

Plat Sound w/Transom & Arch Spkrs-2 pr.
 Plat Sound w/Transom Spkrs.
 Prem Sound w/Transom
 & Arch Spkrs-1 pr.
 Prem Sound w/Transom Spkrs.
 Satellite Radio System
 Stereo Remote, Transom (Std. Sound)

Structure, Safety, & Performance

Battery Maintainer/Charger, 110v
 Battery Maintainer/Charger, 220v
 Battery Switch, Dual w/ACR (required)
 CE Requirements w/Automatic
 Fire Extinguisher
 Drivers Rearview Mirror (W/S Mount)
 Fire Extinguisher, Automatic System
 Tool Kit
 Windlass, All Chain w/Anchor



R7 SURF

COBALT BOATS

SURF
SERIES

R7 SURF

Cobalt surfing perfection.

Until now, wake surfing boats have compromised ride, comfort, top speed performance, and low speed maneuverability. That was before the WSS SURF from Cobalt. Combining Cobalt's award-winning smooth ride and the performance advantages of a stern drive, coupled with the enormous wake making capabilities of a surf boat - this was the perfect challenge! Now perfectly executed. And without compromise.

The WSS Surf combines a proven deep v hull design with innovative design to exceed the riders' demands. We developed a world class "wake maker" thanks to our patent pending SURF control system - which quickly and automatically tunes the boat's attitude and speed to the optimal SURF configuration - on either side of the boat. A fully customizable wake that provides smooth transitions, a wide push zone, and a solid pop. Keep the boat evenly weighted and switch the wave from each side in seconds without the need to re-distribute ballast and people.

VOLVO PENTA FORWARD DRIVE

Volvo Penta does it again with the all-new Forward Drive propulsion system. Uniquely engineered with two forward-facing counter-rotating props that pull the boat through the water rather than pushing it, Forward Drive gives small-craft leisure boaters new found versatility. Whether wakesurfing, wakeboarding or simply cruising, Forward Drive allows boaters to enjoy endless days of fun without sacrifice. Armed with power trim and an enlarged trim plate, drivers can easily customize their wake for watersports, then level off for smooth cruising.



SURF



SURF



Surfing Made Simple

With the touch of a button Cobalt's automated computer control surf system adjusts the Bi-Axis Surf Tabs to create the optimum surf wake either left or right. No need to transfer ballast load between tanks to achieve optimum surf wake.

- Fill ballast tanks
- Set GPS directed cruise control to desired speed
- Select surf control left or right
- Throttle up and surf

On Plane with Full Ballast

In Performance Mode the surf tabs automatically deploy and adjust for a quick hole-shot through to running speed, easily getting the boat on plane with full ballast. No need to empty tanks for a quick run at speed.

Performance of Total Trim Control

Exceptional wake surfing doesn't come at a compromise to Cobalt's softer, drier, faster ride. With the versatility of full-range power trim all the control and efficient operation remains. Drivers can easily customize the wake for surfing, wakeboarding or smooth cruising. Plus, Volvo's Forward Drive is uniquely engineered with two forward-facing counter-rotating props, which position the propellers to the front of the drive unit, well under the boat.

The Cobalt WSS SURF

The best aspects of boating by providing a world-class ride combined with a superior surf wake.

Compromise Nothing!

VOLVO PENTA FORWARD DRIVE



R7 SURF



R7 SURF



R7 SURF



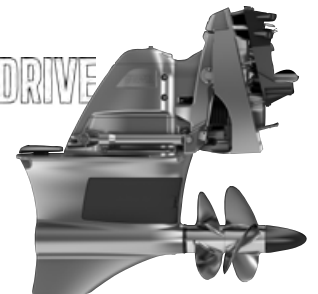
SPECIFICATIONS

Length Overall w/Swim Platform	27' 6"	8.38 m
Beam	8' 6"	2.59 m
Interior Cockpit Width	95"	2.41 m
Deadrise at Transom	21°	21°
Fuel Capacity	78 gal.	295 L
Freshwater Capacity	10 gal.	38 L
Bridge Clearance w/o Bimini	64"	1.63 m
Bridge Clearance w/Bimini	91"	2.31 m
Bridge Clearance w/Arch or Tower	98"	2.49 m
Draft Drive Up	34"	.86 m
Draft Drive Down	37"	.94 m
Dry Weight	5600 lbs.	2540 kg
Ballast Capacity Total (4 tanks)	1225 lbs.	555 Kg
Boat Certified Capacity	Yacht Certified	
Boat Certified Capacity w/gear	Yacht Certified	

VOLVO PENTA STERNDRIVE POWER

V8-300CE-G EVC DP (FWD)	300 hp	221 PkW
V8-350CE-G EVC DP (FWD)	350 hp	261 PkW
V8-380CE EVC DP (FWD)	380 hp	283 PkW
V8-430CE EVC DP (FWD)	430 hp	321 PkW

**VOLVO
PENTA**
FORWARD DRIVE





STANDARD EQUIPMENT

Dash and Instrumentation

Accessory Power Plug - 12 Volt
 Black Leather/SS Steering Wheel
 Color-Matched Aluminum Dash Panels
 Composite Helm Eyebrow,
 Custom Stitching
 Dash Perimeter SS Accent Trim
 Depth & Water Temp Pkg.
 Easy-Surf Electronic Control System
 Glass Cockpit, Garmin 7607
 Gloss Black Dash Console w/SS Accents
 Hour Meter
 Illuminated Switch Panel/Switches
 Stainless Steel Switches

Engine Options

EVC w/PTA & Cruise (Volvo)
 Volvo Forward Drive (FWD)

Exterior

Anchor Locker
 Arch, SS/Alum w/Sunshade
 Bow Scuff Plate, Stainless Steel
 Extended Running Surface
 Fender Clips w/Line (4)
 Graphics, Molded-In Gelcoat
 Midship Cleats
 Ski Pylon (arch mounted)
 Sky Light (Head Compartment)
 Sof-Trac Mat, Flip Down Swim Step
 SS Tubular Platform Perimeter Rail
 Stainless Steel Engine Vents
 Stainless Top Trim Windshield
 Swim Platform w/Flip-Down Swim Step
 Wakeboard Racks, Elite (Alum)

Interior

Aft Facing Rumble Seat
 Aft Sunpad Backrest SS Accent Rail
 Aft Walk-Thru Carpet
 Bow Cushion Insert, Stbd.
 Bow Walk-Thru Doors
 Carpet, 40 oz., Snap-In w/Neoprene Back
 Console, Cockpit
 Del Mar Helm Capt. Chair
 Head w/Porta Potti
 Passenger Seat Flip Backrest System
 Removable Bow & Cockpit Carpet
 Seating Varadense Comfort
 Sundeck Convertible Lounger
 Trash Receptacle, Cockpit

Stereo

Custom Acoustic Speaker Covers
 iPod/USB/MP3 Port
 Sound System, Bluetooth, w/6 Spkr.
 Stereo Remote, Dash
 Stereo Remote, Transom (Prem. Sound)

Structure, Safety, & Performance

10/5/3 Year Warranty Protection
 Battery Switch, Single
 Circuit Breaker Protected Elec System
 Composite Floor
 Composite Transom
 Cruise Control-Zero Off
 Fiberglass Cockpit Liner
 Fiberglass Stringer System
 Fire Extinguisher, Manual
 Ignition Safety Switch
 Kevlar Reinforced Hull
 Rigid Multi-Tank Ballast System
 Single-Axis Performance Surf Tab System
 Stainless Steel Windshield Braces
 Through Prop Exhaust

OPTIONAL EQUIPMENT

Canvas

Bow Tonneau Cover
 Cockpit Tonneau Cover
 Mooring Cover

Dash and Instrumentation

Makassar Dash/Interior Trim Pkg.
 Rudder Indicator, Volvo
 XM Weather

Engine Options

Anti-Corrosion System (Vol 200-300hp)

Exterior

Arch Elec, Alum Folding w/Bimini
 Arch, Alum, Folding w/Bimini
 Arch, Elec Folding w/Rotating Sunshade
 Arch, Folding w/Rotating Sunshade
 Arch, SS/Alum w/Sunshade (std)
 Docking Lights-Stainless Steel
 Motorbox Actuator
 Portal Light (1 in Head Compartment)
 Sof-Trac Mat, Flip Down Swim Step
 Surf Tow Ball (2)-Folding Arch only
 Swim Platform Transom Lighting
 Transhield Shipping Cover
 Transom Shower
 Transom Tilt Switch

Umbrella w/Receiver (ski pylon mounted)
 Underwater Lighting
 Wakeboard Racks, Triton

Interior

Air Compressor w/Holder
 Bow Center Cushion Insert
 Captain's Chair, Power
 Dinette Table w/CP & Sunpad Receptacle
 Floor Covering, Sea Grass
 Head w/Electric Porcelain Toilet
 Head w/Electric Porcelain, Macerator
 Head w/Pump Out Porta-Potti, Macerator
 Head w/Pump Out Porta-Potti, Macerator
 LED Interior Accent Lighting (RGB)
 Quilted Pattern Upholstery Accents
 Remote Courtesy Lights w/key fob
 Sink Console (head compartment)
 Sink Console, Cockpit
 Sof-Trac Marine Mat, Cockpit
 Stainless Steel Foot Tread (helm only)
 Sunpad Filler Cushion (w/Dinette)
 Sunpad Filler Cushion (w/o Dinette)
 Throw Pillows, Weighted (10)
 Throw Pillows, Weighted (4)

Steras

Plat Sound w/Transom & Arch Spkrs-2 pr.
 Plat Sound w/Transom Spkrs.
 Prem Sound w/Transom
 & Arch Spkrs-1 pr.
 Prem Sound w/Transom Spkrs.
 Satellite Radio System
 Stereo Remote, Transom (Std. Sound)

Structure, Safety, & Performance

Battery Maintainer/Charger, 110v
 Battery Maintainer/Charger, 220v
 Battery Switch, Dual w/ACR (required)
 CE Requirements w/Automatic
 Fire Extinguisher
 Drivers Rearview Mirror (W/S Mount)
 Fire Extinguisher, Automatic System
 Tool Kit
 Windlass, All Chain w/Anchor



WSS
WATER SPORTS SERIES

COBALT BOATS

We just amplify the waves that life already gives you.

Fused with the intrinsic DNA of traditional Cobalt models and the wakeboarding advantages of a sterndrive, we present to you the Water Sports Series. WSS stands for everything that's fun on the water! Flexibility of speed when you need it, and power when demanded, the WSS delivers day in and day out. Now you hold the power to adjust wakes with the touch of a trim switch, giving both captain and boarder complete flexibility. What's in the name of WSS?

Water Sports Tower Choices with Bimini Top – They are solid, sturdy and pro-athlete strong with life-long good looks, heavy-gauged anodized aluminum and stainless steel, precision-machined billet fittings. The WSS towers and arches are designed with integrated billet board racks for your favorite boards and with a flip of a swivel-lock, swing the racks inboard for easy access. And we can't forget the optional tower lights, and driver's rear-view mirror, and directional speakers with 360 degree flexibility, well, you see this is not just another wakeboard want-to-be.

Exterior Graphics – Our Design Your Dream tool has thousands of color combinations to create your own masterpiece. All showcased by the chrome WSS hull emblem and a WSS badge at the transom. Customize your Cobalt simply because – you deserve it.

Interior Styling – WSS customization continues inside with finishing touches that include WSS badging and a choice of color-matched piping complimented by our champagne vinyl, an offering exclusive for the WSS. Finally, the dash panel is highlighted in a carbon tone for the finishing touch.

Features and Options	R3	R5	R7
White Aluminum Folding Arch	O	O	O
Black Aluminum Folding Arch	O	O	O
White Aluminum Electric Folding Arch	O	O	O
Black Aluminum Electric Folding Arch	O	O	O
Custom Stainless Steel & Aluminum Arch	S	S	S
Integrated Board Racks	S	S	S
Arch/Tower Bimini Top	S	S	S
SeaDek™ Mat	S	S	S
Interior Upgrade (Piping Colors, Badging)	S	S	S
2 Color Sport WSS Hull Graphic	S	S	S
3 Color Classic WSS Hull Graphic	S	S	S
Cruise Control (GPS)	O	O	O
Tower Speakers	O	O	O
Transom Stereo Remote	O	O	O
Trim Tabs	O	O	O
Driver's Rear View Mirror	O	O	O
Premium Sound Upgrade	O	O	O
Satellite Radio	O	O	O

R3WSS



R3WSS



SPECIFICATIONS

Length Overall w/Swim Platform	23' 10"	7.26m
Beam	8' 6"	2.59 m
Interior Cockpit Width	95"	2.41 m
Deadrise at Transom	21°	21°
Fuel Capacity	50 gal.	189 L
Freshwater Capacity	10 gal.	38 L
Bridge Clearance w/o Bimini	62"	1.57 m
Bridge Clearance w/Bimini	89"	2.26 m
Bridge Clearance w/Arch or Tower	96"	2.44 m
Draft Drive Up	21"	.53 m
Draft Drive Down	37"	.94 m
Dry Weight	4450 lbs.	2018 kg
Boat Certified Capacity	12 persons	
Boat Certified Capacity w/gear	1800 lbs.	816 kg

VOLVO PENTA STERNDRIVE POWER

V8-300CE-G EVC DP	300 hp	221 PkW
V8-350CE-G EVC DP	350 hp	261 PkW
V8-380CE EVC DP	380 hp	283 PkW
V8-430CE EVC DP	430 hp	321 PkW

MERCURISER STERNDRIVE POWER

6.2 L MPI ECT DTS-300 B3	300 hp	221 PkW
6.2 L MPI ECT DTS-350 B3	350 hp	261 PkW
8.2 Mag ECT DTS B3X	380 hp	283 PkW
8.2 Mag HO ECT DTS B3X	430 hp	321 PkW

WSS

WATER SPORTS SERIES



R5W5S



R5W5S

SPECIFICATIONS

Length Overall w/Swim Platform	25' 8"	7.82 m
Beam	8' 6"	2.59 m
Interior Cockpit Width	95"	2.41 m
Deadrise at Transom	21°	21°
Fuel Capacity	50 gal.	189 L
Freshwater Capacity	10 gal.	38 L
Bridge Clearance w/o Bimini	64"	1.63 m
Bridge Clearance w/Bimini	91"	2.31 m
Bridge Clearance w/Arch or Tower	98"	2.49 m
Draft Drive Up	21"	.53 m
Draft Drive Down	37"	.94 m
Dry Weight	4880 lbs.	2214 kg
Boat Certified Capacity	14 persons	
Boat Certified Capacity w/gear	2250 lbs.	1021 kg

VOLVO PENTA STERNDRIVE POWER

V8-300CE-G EVC DP	300 hp	221 PkW
V8-350CE-G EVC DP	350 hp	261 PkW
V8-380CE EVC DP	380 hp	283 PkW
V8-430CE EVC DP	430 hp	321 PkW

MERCURISER STERNDRIVE POWER

6.2 L MPI ECT DTS-300 B3	300 hp	221 PkW
6.2 L MPI ECT DTS-350 B3	350 hp	261 PkW
8.2 Mag ECT DTS B3X	380 hp	283 PkW
8.2 Mag HO ECT DTS B3X	430 hp	321 PkW

W5S
WATER SPORTS SERIES

R7WSS



R7WSS



SPECIFICATIONS

Length Overall w/Swim Platform	27' 6"	8.38 m
Beam	8' 6"	2.59 m
Interior Cockpit Width	95"	2.41 m
Deadrise at Transom	21°	21°
Fuel Capacity	77 gal.	291 L
Freshwater Capacity	10 gal.	38 L
Bridge Clearance w/o Bimini	64"	1.63 m
Bridge Clearance w/Bimini	91"	2.31 m
Bridge Clearance w/Arch or Tower	98"	2.49 m
Draft Drive Up	21"	.53 m
Draft Drive Down	37"	.94 m
Dry Weight	5600 lbs.	2540 kg
Boat Certified Capacity	Yacht Certified	
Boat Certified Capacity w/gear	Yacht Certified	

VOLVO PENTA STERNDRIVE POWER

V8-300CE-G EVC DP	300 hp	221 PkW
V8-350CE-G EVC DP	350 hp	261 PkW
V8-380CE EVC DP	380 hp	283 PkW
V8-430CE EVC DP	430 hp	321 PkW

MERCURISER STERNDRIVE POWER

6.2 L MPI ECT DTS-300 B3	300 hp	221 PkW
6.2 L MPI ECT DTS-350 B3	350 hp	261 PkW
8.2 Mag ECT DTS B3X	380 hp	283 PkW
8.2 Mag HO ECT DTS B3X	430 hp	321 PkW

WSS
WATER SPORTS SERIES



23SC

COBALT BOATS

SC SERIES

COBALT 23SC

Expect the extraordinary.

The 23SC is contoured for accessibility, consider over the bow to the beach via the beach boarding ladder. Convenient and easy to deploy, just step over the bow and feel the sand between your toes. Or head to the transom and take a quick dip using the exclusive swim step.

Take the helm and you will notice all the expected Cobalt standards: quickness to plane, smooth ride, stability in turns. And how the 23SC does wow. Heads will turn in amazement as she glides across the chop with all smiles aboard. With outboard power fusing efficiency, speed and light weight, this intelligent design absolutely sets the standard for performance. You should expect that of Cobalt craftsmanship. And what will exceed those expectations is what lies inside.

From the multi-use sunpad and adjustable backrest, to the plush seating arrangements and well-placed storage compartments, the 23SC features impeccable amenities that make everyone on board feel important. And be sure to invite all your extra buddies, too, because the broad shaped bow has plenty of room for extra seating.

Everything about the SC speaks of strength and integrity: an all composite transom, an all fiberglass stringer system and cockpit liner deck, a Kevlar® reinforced hull, solid stainless steel windshield braces – all backed by what is undeniably the most vigorous warranty in the industry.

It's all here, the difference between ordinary and extraordinary.



23sc



23sc





COBALT 23SC



SPECIFICATIONS

Length Overall w/ Swim Platform	23' 2"	7.06 m
Beam	8' 6"	2.59 m
Interior Cockpit Width	87"	2.21 m
Deadrise at Transom	21°	21°
Fuel Capacity	59 gal	223 L
Freshwater Capacity	10 gal	37.8 L
Holding Tank Capacity	10 gal	37.8 L
Bridge Clearance w/o Bimini	4' 11"	1.50 m
Bridge Clearance w/Arch or Tower	8' 1"	2.46 m
Draft Drive Up	20"	.50 m
Draft Drive Down	38"	.97 m
Dry Weight	4200 lbs.	1905 Kg
Boat Certified Capacity	12 persons	
Boat Certified Capacity w/gear	1595 lbs.	732 Kg

YAMAHA OUTBOARD POWER

F250 XCA, D.E.C. w/Sea Star PAS	250 hp	186 PkW
F300 XCA, D.E.C. w/Sea Star PAS	300 hp	224 PkW

MERCURY OUTBOARD POWER

250 Verado w/PAS	250 hp	186 PkW
300 Verado w/PAS	300 hp	224 PkW

COBALT 23SC



STANDARD EQUIPMENT

Cockpit Configuration

Cockpit Seat, Stbd.

Dash and Instrumentation

Accessory Power Plug - 12 Volt
Black Leather/SS Steering Wheel
Color-Matched Aluminum Dash Panels
Composite Helm Eyebrow,
Custom Stitching
Depth & Water/Air Temp Gauge Pkg.
Glass Cockpit, Dual Garmin 7607
Gloss Black Dash Console w/SS Accents
Hour Meter
Stainless Steel Switches

Exterior

Anchor Locker
Bow Boarding Ladder, SS
Bow Scuff Plate, Stainless Steel
Extended Running Surface
Fender Clips w/Line (4)
Graphics, Molded-In Gelcoat
Midship Cleats
SS Tubular Platform Perimeter Rail
Stainless Top Trim Windshield
Swim Step, Stbd.
Transhield Shipping Cover

Interior

Aft Sunpad w/Adjustable Backrest
Aft Walk-Thru Carpet
Bench Seat Storage (bow & cockpit)
Bow Walk-Thru Door
Carpet, 40 oz., Snap-In w/Neoprene Back
Double-Wide Helm Seat
Head w/Porta Potti
Passenger Seat Flip Backrest System
Removable Bow & Cockpit Carpet
Seating Varadense Comfort
Trash Receptacle, Cockpit
Walk-Thru Transom

Stereo

iPod/USB/MP3 Port
Sound System, Bluetooth, w/6 Spkrs.
Stereo Remote, Dash
Stereo Remote, Transom (Prem. Sound)

Structure, Safety, & Performance

10/5/3 Year Warranty Protection
Battery Switch, Single
Circuit Breaker Protected Elec System
Composite Floor
Composite Transom
Fiberglass Cockpit Liner
Fiberglass Stringer System
Fire Extinguisher, Manual
Ignition Safety Switch
Kevlar Reinforced Hull
Stainless Steel Windshield Braces

OPTIONAL EQUIPMENT

Canvas

Bimini, Premium
Bimini, Premium Easy-Fold
Bow Tonneau Cover
Cockpit Tonneau Cover
Mooring Cover

Cockpit Configuration

Cockpit Seat, Stbd. (replaces Galley)
Galley, Cockpit w/Sink (Replaces Seat)

Dash and Instrumentation

XM Weather

Engine Options

Merc Eng Color, Cold Fusion White

Exterior

Arch Elec, Alum Folding w/Bimini
Arch, Alum, Folding w/Bimini
Boarding Ladder, Port
Bow & Transom Shower Pkg.
COBALT Oval Logo, Recessed
Flagpole w/Flag
Portal Light (1 in Head Compartment)
Ski Tow
Sof-Trac Mat, Flip-Down Swim Step
Sport Tower w/Sunshade
Swim Platform Transom Lighting
Underwater Lighting
Wakeboard Racks, Elite (Alum)
Wakeboard Racks, Triton

Interior

Air Compressor w/Holder
Bow Filler Cushions, Port & Stbd.
Captain's Chair, Power
Dinette Table, Cockpit
Floor Covering, Sea Grass
Head w/Electric Porcelain Toilet
Head w/Electric Porcelain, Macerator
Head w/Pump Out Porta Potti
Head w/Pump Out Porta Potti, Macerator
LED Interior Accent Lighting (RGB)
Remote Courtesy Lights w/key fob
Sink Console (head compartment)
Sof-Trac Marine Mat, Cockpit
Stainless Steel Foot Tread (helm only)
Throw Pillows, Weighted (10)
Throw Pillows, Weighted (4)

Stereo

Plat Sound System (transom spkrs. n/a)
Plat Sound System w/Arch Spkrs-2 pr.
Prem Sound System w/Arch Spkrs-1 pr.
Premium Sound System
(transom spkrs. n/a)
Satellite Radio System
Stereo Remote, Transom (Std. Sound)

Structure, Safety, & Performance

Battery Maintainer/Charger, 110v
Battery Maintainer/Charger, 220v
Battery Switch, Dual w/ACR
Drivers Rearview Mirror (W/S Mount)
Tool Kit
Trim Tabs w/Indicators



25SC

COBALT BOATS

SC SERIES

COBALT 25SC

When the sun shines, it reigns.

On most boats, the party almost always takes place out back. But this isn't like most boats. Nope, we changed things up a bit with this one. The 25SC has the perfect party pad up front due to its wide bow shape. This beach-goer even has a forward entry ladder making it easy to hop off the front when it's time hit the sand for some beach volleyball.

When it's time to mosey on back aboard and take a ride to the next hot spot, you and your guests will be surrounded by stylish comfort and good vibes. That's because with every Cobalt, first-class luxury, convenience and versatility are all non-negotiables.

Let's say the party is starting to fizzle and you just want some peace and quiet. Step aboard and be amazed at how quiet the ride is – not a peep from the engine. That's because this brand new outboard engine was designed to be exceptionally quiet and smooth. Instead, hear the wind going through your hair and your crew having normal, conversation. Pretty nice, huh?

And it wouldn't be a party until the Captain does a little showing off at the end of the day. The impeccable handling of the 25SC makes tight turns at high speeds look like a piece of cake. Ending the day's activities on a high note, to say the least.



25sc



25sc





COBALT 25SC



SPECIFICATIONS

Length Overall w/ Swim Platform	24' 9"	7.54 m
Beam	8' 6"	2.59 m
Interior Cockpit Width	87"	2.21 m
Deadrise at Transom	21°	21°
Fuel Capacity	73 gal	276 L
Freshwater Capacity	10 gal	37.8 L
Holding Tank Capacity	10 gal	37.8 L
Bridge Clearance w/o Bimini	4' 11"	1.50 m
Bridge Clearance w/Arch or Tower	8' 1"	2.46 m
Draft Drive Up	20"	.50 m
Draft Drive Down	38"	.97 m
Dry Weight	4500 lbs.	2041 Kg
Boat Certified Capacity	13 persons	
Boat Certified Capacity w/gear	1850 lbs.	839 kg

YAMAHA OUTBOARD POWER

F250 XCA, D.E.C. w/Sea Star PAS	250 hp	186 PkW
F300 XCA, D.E.C. w/Sea Star PAS	300 hp	224 PkW
F350 XCA, D.E.C. w/Sea Star PAS	350 hp	261 PkW

MERCURY OUTBOARD POWER

250 Verado w/PAS	250 hp	186 PkW
300 Verado w/PAS	300 hp	224 PkW
350 Verado w/PAS	350 hp	261 PkW

COBALT 25SC



STANDARD EQUIPMENT

Dash and Instrumentation

Accessory Power Plug - 12 Volt
Black Leather/SS Steering Wheel
Color-Matched Aluminum Dash Panels
Composite Helm Eyebrow,
Custom Stitching
Depth & Water/Air Temp Gauge Pkg.
Glass Cockpit, Dual Garmin 7607
Gloss Black Dash Console w/SS Accents
Hour Meter
Stainless Steel Switches
Hour Meter
Stainless Steel Switches

Exterior

Anchor Locker
Bow Boarding Ladder, SS
Bow Scuff Plate, Stainless Steel
Extended Running Surface
Fender Clips w/Line (4)
Graphics, Molded-In Gelcoat
Midship Cleats
SS Tubular Platform Perimeter Rail
Stainless Top Trim Windshield
Swim Step, Stbd.
Transhield Shipping Cover

Interior

Aft Sunpad w/Adjustable Backrest
Aft Walk-Thru Carpet
Bench Seat Storage (bow & cockpit)
Bow Walk-Thru Door
Carpet, 40 oz., Snap-In w/Neoprene Back
Double-Wide Helm Seat
Head w/Porta Potti
Passenger Seat Flip Backrest System
Removable Bow & Cockpit Carpet
Seating Varadense Comfort
Trash Receptacle, Cockpit
Walk-Thru Transom

Stereo

iPod/USB/MP3 Port
Sound System, Bluetooth, w/6 Spkrs.
Stereo Remote, Dash
Stereo Remote, Transom (Prem. Sound)

Structure, Safety, & Performance

10/5/3 Year Warranty Protection
Battery Switch, Single

Circuit Breaker Protected Elec System
Composite Floor
Composite Transom
Fiberglass Cockpit Liner
Fiberglass Stringer System
Fire Extinguisher, Manual
Ignition Safety Switch
Kevlar Reinforced Hull
Stainless Steel Windshield Braces

OPTIONAL EQUIPMENT

Canvas

Bimini, Premium
Bimini, Premium Easy-Fold
Bow Tonneau Cover
Cockpit Tonneau Cover
Mooring Cover

Cockpit Configuration

Cockpit Seat, Stbd. (replaces Galley)
Galley, Cockpit w/Sink (Replaces Seat)

Dash and Instrumentation

XM Weather

Engine Options

Merc Eng Color, Cold Fusion White

Exterior

Arch Elec, Alum Folding w/Bimini
Arch, Alum, Folding w/Bimini
Boarding Ladder, Port
Bow & Transom Shower Pkg.
COBALT Oval Logo, Recessed
Flagpole w/Flag
Portal Light (1 in Head Compartment)
Ski Tow
Sof-Trac Mat, Flip-Down Swim Step
Sport Tower w/Sunshade
Swim Platform Transom Lighting
Underwater Lighting
Wakeboard Racks, Elite (Alum)
Wakeboard Racks, Triton

Interior

Air Compressor w/Holder
Bow Filler Cushions, Port & Stbd.
Captain's Chair, Power
Dinette Table, Cockpit
Floor Covering, Sea Grass
Head w/Electric Porcelain Toilet
Head w/Electric Porcelain, Macerator

Head w/Pump Out Porta Potti
Head w/Pump Out Porta Potti, Macerator
LED Interior Accent Lighting (RGB)
Refrigerator (cockpit)
Remote Courtesy Lights w/key fob
Sink Console (head compartment)
Sof-Trac Marine Mat, Cockpit
Stainless Steel Foot Tread (helm only)
Step, Cockpit (folding)
Throw Pillows, Weighted (10)
Throw Pillows, Weighted (4)

Stereo

Plat Sound System (transom spkrs. n/a)
Plat Sound System w/Arch Spkrs-2 pr.
Prem Sound System w/Arch Spkrs-1 pr.
Premium Sound System
(transom spkrs. n/a)
Satellite Radio System
Stereo Remote, Transom (Std. Sound)

Structure, Safety, & Performance

Battery Maintainer/Charger, 110v
Battery Maintainer/Charger, 220v
Battery Switch, Dual w/ACR
Drivers Rearview Mirror (W/S Mount)
Tool Kit
Trim Tabs w/Indicators
Windlass, All Chain w/Anchor



30SC

COBALT BOATS

SC SERIES

COBALT 30SC

An Innovative Revival of Tradition

Comes now the 30SC, the third in a series of remarkable watercraft, each representing Cobalt's unmistakable contributions to the revival of the outboard engine. Cobalt has been, by no means, the first manufacturer to offer knowledgeable boaters a newfound choice of improved powertrains. Rather, Cobalt has again sought to move purposefully to the ultimate possibilities of intelligent design, to at last bring to market boats redrawn, reoriented, reweighted, renewed toward a single purpose. That is, to add convenience and economy – and quiet, blessed quiet -- in a new way to the traditional Cobalt virtues of performance, handling, comfort, luxury, and room, lots of livable room.

Cobalt engineers understood that the simple slapping of a couple of high-horse Mercs on the stern of any old hull would not, could not an outboard-boat make. The dynamics of thrust and torque necessarily affect hull design. But now, the power of those high-horse engines has been channeled toward economical, efficient, easily maintained enjoyment riding in a hull made just to order.



30sc





COBALT 30SC



SPECIFICATIONS

Length Overall w/o Engines	29' 8"	9.04 m
Beam	9' 9"	2.97 m
Interior Cockpit Width	8' 5"	2.57 m
Deadrise at Transom	21°	21°
Fuel Capacity	130 gal	492 L
Freshwater Capacity	18 gal	68 L
Holding Tank Capacity	9 gal	34 L
Bridge Clearance (windshield only)	5' 0"	1.52 m
Draft Drive Up, Twin Engines	tbd	
Draft Drive Down, Twin Engines	tbd	
Dry Weight, w/Twin Engines	tbd	
Boat Certified Capacity	Yacht Certified	
Boat Certified Capacity w/gear	Yacht Certified	

YAMAHA OUTBOARD POWER

Twin F250 XCA, D.E.C. w/Sea Star PAS	250 hp	186 PkW
Twin F300 XCA, D.E.C. w/Sea Star PAS	300 hp	224 PkW
Twin F350 XCA, D.E.C. w/Sea Star PAS	350 hp	261 PkW

MERCURY OUTBOARD POWER

Twin 250 Verado w/PAS	250 hp	186 PkW
Twin 300 Verado w/PAS	300 hp	224 PkW
Twin 350 Verado w/PAS	350 hp	261 PkW

COBALT 30SC



STANDARD EQUIPMENT

Dash and Instrumentation

Accessory Power Plug - 12 Volt
Color-Matched Helm Switch Panels
Compass (digital)
Composite Helm Eyebrow,
Custom Stitching
Dash Perimeter Black Accent Trim
Depth & Water/Air Temp Gauge Pkg.
Glass Cockpit, Dual Garmin 741
Gloss Black Dash Console
Hour Meter
Premium Black Leather/
SS Steering Wheel
Stainless Steel Switches

Engine Options

Seastar EPS Steering System

Exterior

Aluminum Windshield,
Black w/SS Header
Anchor Locker
Bow Scuff Plate, Stainless Steel
Extended Running Surface
Fender Clips w/Line (6)
Graphics, Molded-In Gelcoat
Midship Cleats
Sky Light (Head Compartment)
Swim Step, Stbd.
Transhield Shipping Cover

Interior

Aft Walk-Thru Carpet
Air Compressor w/Holder
Bench Seat Storage, Bow & Cockpit
Bow Walk-Thru Doors
Carpet, 40 oz., Snap-In w/Neoprene Back
Cooler, Icon (removable)
Dual Sundeck Convertible Lounger
Filler Cushion, Cockpit Seat
Head w/Pump Out Porta Potti
Helm Seat, Double Wide w/Flip-Lip
Passenger's Seat Flip Backrest System
Removable Bow & Cockpit Carpet
Seating Varadense Comfort
Sink Console (head compartment)
Ski Storage w/Fiberglass Liner
Trash Receptacle

Stereo

iPod/USB/MP3 Port
Sound System w 6 Spkrs. (na w/hardtop)
Stereo Remote, Dash
Stereo Remote, Transom (Prem. Sound)

Structure, Safety, & Performance

10/5/3 Year Warranty Protection
Battery Switch, Dual w/ACR
Circuit Breaker Protected Elec System
Composite Floor
Composite Seat Bases
Composite Transom
Fiberglass Cockpit Liner
Fiberglass Stringer System
Fire Extinguisher, Manual
Ignition Safety Switch
Kevlar Reinforced Hull
Stainless Steel Windshield Braces

OPTIONAL EQUIPMENT

Canvas

Bimini, Premium Easy-Fold
Bow Tonneau Cover
Cockpit Tonneau Cover
Mooring Cover

Dash and Instrumentation

Makassar Dash/Interior Trim Pkg.
XM Weather

Engine Options

Anti-Corrosion System (Vol Merc)
Eng Color, Cold Fusion White
Mercury JPO Joystick
Yamaha Seastar Optimus 360 Joystick

Exterior

Arch, SS/Alum w/Hard Top
& Retract Shade
Arch, SS/Alum w/Sunshade
Arch, SS/Alum w/Hard Top
& Elec Sureshade
Boarding Ladder, Port
COBALT Oval Logo, Recessed
Color Accented Headliner for Hard Top
Docking Lights-Stainless Steel
Flagpole w/Flag
Portal Light (1 in Head Compartment)
Ski Tow

Sof-Trac Mat, Flip-Down Swim Step
Swim Platform Transom Lighting
Transom Shower
Underwater Lighting
Wakeboard Racks, Elite (Alum)
Wakeboard Racks, Triton

Interior

Bow Center Cushion Insert
Dinette Table w/Bow &
Cockpit Receptacle
Floor Covering, Sea Grass
Galley, Cockpit (replaces seat)
Grey Water System
Head w/Pump Out Porta-Potti, Macerator
Head w/VacuFlush
Head w/VacuFlush, Macerator
LED Interior Accent Lighting (RGB)
Quilted Pattern Upholstery Accents
Refrigerator
Remote Courtesy Lights w/key fob
Sof-Trac Marine Mat, Cockpit
Stainless Steel Foot Tread (helm only)
Throw Pillows, Weighted (10)
Throw Pillows, Weighted (4)

Stereo

Plat Sound w/Transom & Arch Spkrs-2 pr.
Plat Sound w/Transom Spkrs.
Prem Sound w/Transom
& Arch Spkrs-1 pr.
Prem Sound w/Transom Spkrs.
Satellite Radio System
Stereo Remote, Transom (Std. Sound)

Structure, Safety, & Performance

Battery Maintainer/Charger, 110v
Battery Maintainer/Charger, 220v
CE Requirements w/Auto Fire Extinguisher
Drivers Rearview Mirror (W/S Mount)
Fire Extinguisher, Automatic System
Tool Kit
Trim Tabs w/Indicators w/Autoglide(twin)
Trim Tabs w/Indicators, w/o Autoglide
Windlass, All Chain w/Anchor